



DOWNTOWN

Bellevue | WA

Savor the New

+ Dining
+ Fall Events
+ Fashion Week



FALL 2017

*Loyal
to the
Local*

BUSINESSES ARE OPEN
DURING **LIGHT RAIL** CONSTRUCTION

Support local businesses | soundtransit.org/loyal2local



Dear Bellevue Downtown Reader,

Turning the page to fall, we invite you to explore the expanding array of exciting places in the heart of our city. Bellevue's Downtown is teeming with new shopping, dining, nightlife and outdoor experiences.

This issue takes us inside one of chef-owner Jason Wilson's latest creations, honoring the craft of the cocktail in a speakeasy setting. Also see the W Hotel, many other new restaurants at Lincoln Square, Cinemark Reserve, Nordstrom Rack and much more. Fashion Week also arrives just in time for a new look and a little back-to-school, back-to-office style.

We highly encourage a visit to the Bellevue Downtown Park, perfectly-situated between the liveliness of Bellevue Square and Old Bellevue. You'll find the recently completed full circle pathway has a beautiful new park entry, a cascading canal, and terraced green space. The Inspiration Playground, envisioned and funded by the Bellevue Rotary Club, is a new standard for outdoor play. It is a kid-approved, accessible-for-all adventure in a downtown environment.

Congratulations and thank you again to the City of Bellevue, every Bellevue taxpayer, Bellevue Rotarians and the myriad contributions of leadership and vision behind the projects. It reminds us how openness to partnerships, support and engagement with the business community, and steadfast love of place by citizens set Bellevue and its downtown apart.

Our growing city core is indicative of Bellevue's status as a thriving city. As we continue to expand with major developments and infrastructure improvements, we're mindful that our safe, clean and welcoming downtown is a direct result of leadership, partnership and continued investment. We celebrate this work as it should help sustain a strong and vibrant community for generations.



Patrick Bannon, Bellevue Downtown Association President

FALL 2017



GameOn Bellevue!	4
Fall Flavors	5
Private Dining.....	6
Voice of the Chef.....	7
Fall Events.....	9
Family Fun.....	10
Urbanite.....	12
The Grand Connection.....	12
Fashion Week	13
Getting Around	15



Cover Photo Inside Caption:
Date Night at Jason Wilson's
Civility & Unrest
Photo: © Matt Jack

Editors: Emma Sullivan
Contributing Writers:
Matt Jack & Augusta DeVries

Join the conversation about Downtown Bellevue!

 /BellevueDowntown #BellevueDowntown
 @BellevueDT  @BellevueDowntown



Join us for Happy Hour

located in the Hilton Bellevue

300 112th Ave SE

\$5 wines by the glass

\$4 draft beers

\$5 "small plate" hors d'oeuvres

ACTIVATE DOWNTOWN



**A New Event Where Tech
Merges With Placemaking
For Two Fun-Filled
Evenings.**

GameOn Bellevue will be a human scaled interactive experience taking place in Downtown Bellevue. Food trucks, music, a digital scavenger hunt, and the world's largest game of Simon will fill the plaza with energy and vibrancy. This community driven and inspired event will exhibit new ways of activating Downtown Bellevue, while bringing together local businesses, industries, and residents in new and inspiring ways.



World's Largest Game of Simon

EVENT INFORMATION

September 28th - 29th
City Center Plaza
bellevuegrandconnection.com

Delivering Remarkable Results

My greatest joy is creating seamless, impeccably coordinated selling experiences that maximize ROI for my clients. I provide complementary staging & organizing, and work tirelessly with my team to transform any house into a highly sought-after "dream home".

**The market is white-hot
right now, call me today!**



BRITT WIBMER

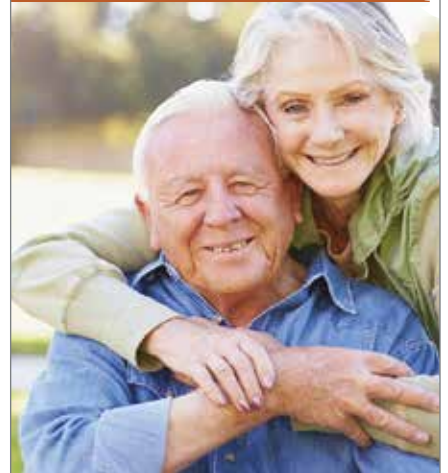
Premier Windermere Broker

206.683.1737

BrittsPicks.com



Autumn at THE BELLETTINI!



**It's not hard to see why people are
moving into The Belletini!**

Located in the heart of Bellevue,
The Belletini offers comfortable,
elegant surroundings and luxurious
restaurant dining. If moving isn't in
your near future, learn how you can
join Club Belletini; where your
membership has its privileges.

**Call today to join us for a private
tour and enjoy a complimentary
lunch in your choice of our two
on-site restaurants.**

The BELLETTINI



**1115 108th Ave. NE Bellevue,
WA 98004**

www.thebelletini.com

425.450.0800

FALL FLAVORS



BRUNCH



DATE NIGHT



GAME DAY

BRUNCH

Fall is the perfect time to expand your palate and try some heartier cuisine. **Lot No. 3's** *Zucchini Pancakes* are a surprise brunch addition but win hearts with chipotle hollandaise. **Eques** in the Hyatt impresses with its *Smoked Salmon Omelet*; a mouthwatering concoction seasoned with caramelized leeks and spinach. **Fika House Kafe** is built around *Fika* – the Nordic idea of gathering with friends or family for coffee – and serves an incredible waffle that will satisfy even the pickiest brunch-goer.

DATE NIGHT

This is the time of year for scarves, cuddling and shorter days. Why not take advantage of the romantic season by treating yourself to a date night at the newly opened **Peony** in Old Bellevue? Peony offers a fresh interpretation of Chinese cuisine in a vibrant and stylish atmosphere that will dazzle your date. A visit to **Bake's Place** will win you points if your date loves live music. Finish the evening with a nightcap at **Japonessa**, now open in the Lincoln Square Expansion. Their *Jinja Ninja* with rye and Canton ginger will put anyone in a good mood.

GAME DAY

Football season is just around the corner and we are ready to fill our plates with some hearty game-day meals. Why not sink your teeth into a *Burger of the Gods* from **Lunchbox Laboratory**, garnished with crumbled bleu cheese and candied balsamic onions, or wash down the sweet aftertaste of victory with a *Bohemian Pilsner* at **Bellevue Brewing**? **Tavern Hall** is the perfect location to celebrate a post Seahawks win by indulging in a heaping serving of *Stadium Nachos*.

PRIVATE DINING

Whether it be for a small party or a large corporate event, knowing about the private dining options in Downtown Bellevue will help you host the perfect event. Check out some of our favorites below!



1. 13 Coins

900 Bellevue Way NE, Suite 100
Upscale Italian-American inspired cuisine.
425.399.2562, 13coins.com
4 rooms, up to 75 guests seated, Catering
Available Offsite

2. Cast Iron Studios

10650 NE 4th ST
Located in the heart of downtown Bellevue, Cast Iron Studios provides an exciting and flexible space for a broad range of private events.
206.838.3853, castironstudios.com
2 rooms, up to 128 guests seated, Catering
Available Offsite

3. Daniel's Broiler

10500 NE 8th ST
Guests appreciate stunning views of the Olympic Mountains, Downtown Bellevue, and the Seattle skyline from the outdoor decks while enjoying steakhouse favorites.
425.990.6310, schwartzbros.com
1 room, up to 130 guests seated, Catering
Available Offsite

4. El Gaucho

450 108th AVE NE
The award-winning menu features the highest quality of steaks, tenderloin filets, ribs, pork, poultry and seafood all prepared to perfection in an exhibition-style kitchen.
425.455.2742, elgaucho.com
6 rooms, up to 56 guests seated, Catering
Available Offsite

5. John Howie Steak

11111 NE 8th ST #125
John Howie Steak built its name serving the most flavorful steaks that are house aged, hand cut, and cooked to perfection.
425.456.1892, johnhowiesteak.com
2 private rooms, 16 - 32 guests each, Catering
Available Offsite, 2-2000 people

6. Purple Café

430 106th AVE NE
Pairs a global wine selection with a menu that combines classic American styles with seasonal Northwest ingredients.
206.838.3853, thepurplecafe.com
1 room, up to 60 guests seated, Catering Available Offsite

7. Ruth's Chris Steakhouse

565 Bellevue Square
Ruth's Chris Steakhouse's perfect broiling method and seasoning techniques ensure each cut of USDA Prime beef is cooked to perfection and sizzling on a 500° plate.
425.451.1550, ruthschris.com
3 rooms, up to 50 guests seated, Catering
Available Offsite

8. Seastar

205 108th AVE NE
Completely renovated as of August 2017, Seastar Restaurant & Raw Bar is recognized as the Pacific Northwest's premier destination for seafood.
425.456.1892, seastarrestaurant.com
4 private rooms, up to 200 guests seated, Catering Available Offsite, 2-2000 people

9. Wild Ginger

508 Bellevue Way NE
This family style restaurant showcases flavors that span Southeast Asia and will transport you to another world.
206.838.4312, wildginger.net
2 rooms, up to 24 guests seated, Catering
Available Offsite

Top Left: Cast Iron Studios, Bottom Left: El Gaucho, Right: Purple Café

Meet Jason Wilson

If you haven't heard of the newest highlight in Bellevue's culinary scene, prepare your palate because it's about to be amazed.

Jason Wilson has been a fixture in the restaurant industry for over 30 years and has just opened two new concepts in Bellevue – **The Lakehouse** and **Civility & Unrest**. His talent for cooking American Regional Food in the Pacific Northwest has earned him many awards and celebrity status in the culinary world as both an innovator in modern cooking and a leader in fine dining, locally and nationally. We asked Chef Wilson about his new approach in Downtown Bellevue.

What was the inspiration behind The Lakehouse and behind Civility & Unrest?

The Lakehouse is about a sense of place. I was inspired by the opportunity to create

a restaurant that identified with Bellevue and in doing so, I wanted to show the inspiration by paying respect to the heritage and history of Bellevue as a farming community, an area with weekend homes and a place where families created strong communities. The Lakehouse focuses on local produce and lets the season dictate what we create with.

Civility & Unrest is all about being a whiskey bar and a cocktail lounge. It's about finding the space, discovering the amazing cocktails and immersing oneself in the culture of a classic cocktail lounge and bar. I love the richness that accompanies a good cocktail: great discussions, great laughs, meeting new



people, bonding and sharing, and oftentimes letting loose, escaping and getting away.

What makes your cuisine unique to the Bellevue area?

My approach to cooking focuses on the bounty of each season from a hyperlocal perspective and a craft cooking approach. This will often mean we will change menus seasonally; sometimes a dish you have in July may not be there in August and so on throughout the year.

What are some highlights on your menu for this fall?

Fall starts in The Lakehouse kitchen in October so I'm sure you will see honeynut squash (a very, very small version of butternut squash), foraged mushrooms, locally raised quince, some small roots grown on Vashon called 'Oca' and many variations using tree-fruits.

What brought you to Bellevue?

I've wanted to do a project in Bellevue since 2010 – just after I won the James Beard award. I see Bellevue as the ideal market for my style of cooking and the growth of Bellevue is something that I'm excited to be part of.

When it comes to a good Cabernet, there's just one point we want to drive home: *Wine Spectator* magazine has given our



10213 Main Street, Bellevue
(425) 455-2033 www.bisonmain.com
Free valet parking

wine list its Award of Excellence 11 years in a row. So if you want to drink really responsibly, Bis is the place to be.

"Somebody call for a Cab?"

– Joe Vilardi, owner



Roasted Cauliflower with curry spice, green apple, herb hummus, preserved lemon and kale pesto.

Photo: Charity Burggraaf

Swim, Salmon, Swim!

September 8, 10 – 11 a.m.
Lake Hills Greenbelt Ranger Station, 15416 SE 16th ST
parkrangerprogram@bellevuewa.gov, 425.452.7225

Autumn brings some of the best months to see wild salmon returning home. They may travel thousands of miles to lay eggs and spawn.

Bellevue Art Museum

Electric Coffin, Future Machine
Through September 10

Emerge/Evolve 2016, Rising Talents in Kiln-Glass
Through October 1

Cut Up/Cut Out
Through October 22

Tess Martin, Ginevra
Through October 22

Come learn about this incredible journey and why the salmon cycle is so important to life in the Pacific Northwest. Free, registration required

Spirit of Bellevue Community Run

September 10, 7 – 11 a.m.
Bellevue Downtown Park, 10201 NE 4th ST
spiritofbellevuerun.com/wordpress

The 2017 Spirit of Bellevue Run/Walk offers a fun and mostly flat 5K for the whole family, a Mile challenge for those that like to push their limits, and a Kids' Fun Run. For those who like to keep track, the race is chip timed.

Susan G Komen 3-Day

September 15, 8 a.m. – 5 p.m.
Walk through Bellevue, Rest Stops at Parks
the3day.org

Your Susan G. Komen 3-Day journey will begin with an inspiring, emotional Opening Ceremony. You'll walk through the shaded neighborhoods of Seattle's suburbs, and spend two

fun-filled nights at our Komen 3 Day camp, bonding with your fellow walkers. It all culminates in a celebratory Closing Ceremony.

Cycle & Walk the WAVE

September 17, 6:30 a.m. – 4:30 p.m.
Bellevue College, 3000 Landerholm Circle SE, Building L & Courtyard
support.cyclethewave.org, 425.284.9901

This bike and walk event is for women of all ages and fitness levels to experience camaraderie, increase awareness of domestic violence through visibility, and raise funds for domestic violence prevention programs across Washington State.

Parents Night Out Black Light Science

September 20, 6 – 9 p.m.
KidsQuest, 1116 108th AVE NE
kidsquestmuseum.org

KidsQuest is rescuing date night! Drop off the kids for a fun evening of pizza, science, and Museum playtime! It's a chance for both adults and kids to



Bellevue Farmer's Market

Thursdays through October 12, 3 – 7 p.m.
Bellevue Presbyterian Church | 1717 Bellevue Way NE
425.454.8474 | bellevuefarmersmarket.org
Come for dinner with a friend, listen to live music from our weekly musical guests and enjoy a cooking demo or a seasonal event. See website for schedules, directions and event info.

enjoy a special evening just for them. \$35 nonmember

Fashion Week at The Bellevue Collection

September 20 – 24
The Bellevue Collection, 575 Bellevue Square

fashionweekbellevue.com

Fashion Week at The Bellevue Collection delivers an extraordinary experience to fashion forward, contemporary and luxury shoppers. Experience exclusive runway shows, trend reports and demonstrations, chic parties and irresistible shopping.

Simon, GameOn Bellevue will take over City Center Plaza with large-scale illuminated gaming installations, food trucks, and smaller interactive displays. Free

Northwest Glass Pumpkin Patch

October 7, 9 a.m. – 3 p.m.
NW Art Center, 9835 NE 24th ST
northwestglasspumpkins.com

Wander through a dazzling array of one-of-a-kind glass pumpkins in a variety of colors, shapes and sizes. These glass pumpkins are perfect for the autumn season, yet beautiful enough to display year-round. Free

Kelsey Creek Farm Fair

October 11, 11 a.m. – 4 p.m.
410130th Place SE
425.452.7688
Children's crafts,



GameOn Bellevue

September 29 – 30, 4 – 10 p.m.
City Center Plaza, corner of NE 6th ST & 110th AVE NE
bellevuegrandconnection.com

Centered around what might be the world's largest installation of

Productions at the Theatre at Meydenbauer Center

11100 NE 6th ST | 425.450.3810 | meydenbauer.com

City Opera Ballet

La Traviata
August 25 – 27

International Ballet Theatre

Dances of Spain
October 14

Moon Festival Melody: Cello Exploration

October 15

Latin Rhythm Academy

Latin Rhythm Dance Festival
October 21

KidsQuest

Children's Museum's

Gingerbread Workshops

November 24th & 25th

Hyatt Regency Bellevue

CANDY CREATIVITY & FESTIVE FUN
for the whole family!

KidsQuest

Children's Museum

For a full list of events visit
BellevueDowntown.com/events

inflatables, entertainment, tractor rides, vintage tractor displays and more. No entrance fee. Costs vary for food and activities. Cash only. No ATM on site.

KidsQuest Carnival

October 21, 6 – 11 p.m.
 600 Bellevue Way NE
kidsquestmuseum.org

An adults-only evening of fun and fundraising to support KidsQuest Children's Museum and the children and families in our community. The KidsQuest Carnival offers

adults the opportunity to experience the power of play with Carnival-style games, drinks and dinner.

Salute to Scotland

October 20, 6 p.m.
 Resonance at SOMA Towers, 288 106th AVE NE
cityoperaballet.org, 425.455.1345

Friday night party with all things Scotland, giving a true inside view of the City Opera Ballet upcoming performance of the original La Sylphide in March 2018. Kilts Encouraged! \$125



Bellevue Botanical Garden

12001 Main Street | 425.452.2750 |
BellevueBotanical.org

Events

Fuschia Show and Plant Sale

August 19, 10 a.m. – 3 p.m.
nwfusciasociety.com

See fuschia blossoms of all shapes and colors, and purchase hardy fuchsias for your home garden. Free

Arts in the Garden

August 26-27, 10 a.m. – 5 p.m.
artsinthegardenbellevue.org

See garden art in a natural setting, meet the artists, and get inspired to bring art into your own home and garden. Discover about 40 artists and a wide variety of sculpture and garden art available for your purchase among the flowerbeds and woodlands of the Bellevue Botanical Garden. Free

Hardy Fern Foundation Plant Sale

September 16, 9 a.m. – 3 p.m.
hardyferns.org
 Free

Master Gardener Plant Sale

September 23, 9:30 a.m. – 4:30 p.m.
mgfkc.org

Shop cool plants from unique, local nurseries and attend sessions with Celebrity Garden Speakers.

Classes & Lectures

From Far and Near: Native and Not-So-Native Plants for the PNW Gardener

August 23, 6:30 – 8:30 p.m.

Coloring Your Garden With Japanese Maples

September 17, 12 – 2 p.m.

Propagation 101

September 28, 6:30 – 8:30 p.m.

Introduction to Mushroom Cultivation

October 5, 6:30 – 8:30 p.m.

Put Your Vegetable Garden to Bed

October 11, 6:30 – 8:30 p.m.

Literature into Art: Books That Changed the Way We Garden

October 18, 7 – 9 p.m.

FEATURED EVENTS



July 11 - September 14
FREE Live Music!
Noon - 1:30pm
 Tuesdays, Wednesdays & Thursdays

BellevueDowntown.com
 for lineup and locations

[@BellevueDT](https://twitter.com/BellevueDT) [/BellevueDowntown](https://facebook.com/BellevueDowntown) [@BellevueDowntown](https://instagram.com/BellevueDowntown)



Magic Season Ice Arena

Presented by Alaska Airlines Visa Signature® card. Returns to Bellevue Downtown Park for the 2017-2018 season.



Snowflake Lane

Produced and Presented by The Bellevue Collection. A nightly parade along Bellevue Way between NE 8th St and NE 4th St. Visit SnowflakeLane.com for complete information.



Garden d'Lights

Presented by Bellevue Botanical Garden Society and Bellevue Parks & Community Services, supported by Classical KING FM 98.1



Holiday Performances

Meydenbauer Center Theatre hosts a magical holiday series of musical and dance productions.

BellevueDowntown.com [/BellevueDowntown](https://facebook.com/BellevueDowntown) [@BellevueDowntown](https://twitter.com/BellevueDowntown) [@BellevueDT](https://instagram.com/BellevueDowntown)



COMPLETING THE CIRCLE



What if our electric grid can't keep up with our fast-growing economy?

The Eastside economy is booming. But the backbone of the Eastside's electric grid hasn't had a major upgrade in 50 years. Today, the aging infrastructure is being pushed beyond its capacity to serve our growing 21st-century communities.

To protect local jobs and businesses, the **Energize Eastside** project will upgrade the old grid with modern infrastructure to keep our lights on for years to come. It will be built to the highest safety standards and run along the corridor of the existing grid.

Learn more at pse.com/energizeeastside.



Downtown Park Completes Circle, Inspires with New Playground

35 YEAR VISION COMPLETE

On June 28, more than 30 years after the original vision took hold for Bellevue's iconic park, Bellevue residents, civic leaders and local, regional and state officials gathered to 'Complete the Circle.'

The 'Complete the Circle' project was made real by a 2008 voter-approved parks levy. New features include completion of the circular channel and tree-lined promenade, creation of a grand entrance and water feature at the south end of the park, terraced seating, stairways and accessible paths, and closing the parking area off NE 2nd Street and expanding the lot off 100th Avenue NE.

INSPIRATION PLAYGROUND

A key feature of the new park is the expanded play area 'Inspiration Playground.' The concept was dreamed up by Bellevue Rotary and made real through a partnership between the City and Bellevue Rotary. The playground features interactive elements such as sculptures that encourage touching and climbing and an interactive music plaza allowing users to create and respond to sound.

Rob Rose, Rotary Co-Chair of Inspiration Playground, states that "offering opportunities for people of all ages and abilities to socialize and play provides exercise and unstructured fun while building understanding and acceptance." Pat Naselow, Rotary Co-Chair, adds that "the playground removes obstacles to participation, creates a place for everybody, and taps into the power of shared experience."

The playground has already become a haven for kids at play in Bellevue and the Downtown Park expansion has cemented the park's role in Bellevue's Downtown identity.

Boys & Girls Club Opens New Location

NEW LOCATION

The Boys and Girls Clubs of Bellevue opened the Jim & Sally A. Nordstrom Bellevue Boys & Girls Clubhouse on October 6, on the site of the former clubhouse right across from the newly opened Bellevue Downtown Park. The new 27,000 foot location features a tech lab, teaching kitchen, dedicated teen space, game room, internet café and preschool among other amenities. The Club hopes the location will help it to increase its impact and serve more families – "more kids, more often."

MISSION

To inspire & enable all young people, especially those who need us most, to reach their full potential as productive, caring, responsible citizens.

DID YOU KNOW?

The Club offers Technology/Stem programs, a Project Learn (after school) program, preschool programs, athletic programs and Club 678 & 'Be Great Graduate' programs designed to help community youth in grades 6 – 12 be more successful in school.

www.bgcbellevue.org



Kids at Play in New Clubhouse

TWO NEW LOCATIONS Coming Soon!



**BRIGHT HORIZONS
AT BELLEVUE SPRING
DISTRICT**

**BRIGHT HORIZONS
AT SAMMAMISH**



TO LEARN MORE ABOUT ENROLLMENT, CONTACT US AT:
brighthouse.com/bellevuedowntown

MEET OUR URBANITE



Kendal Callison

Neighborhood: Old Bellevue
Work: VP, People at Auth0

Kendal moved to Old Bellevue in 2012 because she loved the smaller-town village feel of Old Bellevue. In June this year, she joined Auth0, an internet security company with headquarters in the Union Bank building on NE 8th.

"There are more and more opportunities in Bellevue to work with progressive, high-tech companies that are making a positive difference in the world," she said about her decision.

How to Sneak in a Workout?

Kendal loves the update to **Downtown Park** and values spending time there with her son.

She added, "The park is such a serene spot in the middle of Bellevue to come together as a community. It's especially fun to run into neighbors and their dogs!"

Kendal has been going to **Hot Yoga Inc** for years and enjoys their Power and Sculpt classes. **Float Bellevue** is her go-to place

Nominate yourself or someone you know to be our next Urbanite by emailing info@bellevuedowntown.org.
*Must live and work in Downtown Bellevue.

when she needs some special R&R.

Best Place for Coffee?

"**Honor Coffee** is perfect for a mid-morning break. Their *matcha tea latte* is fantastic!"

Best Happy Hour?

"**Scotty Brown's** patio is a solid choice after work for happy hour," she reported.

"**Ginza** on Main Street has the most incredible *specialty pumpkin rice* and the fresh sashimi and sushi can't be beat when the craving strikes."

Favorite Fall Activities...

"I love heading to the **Bellevue Farmers Market** on Thursdays to pick up seasonal flowers, veggies, fruit and original artisan specialties," Kendal said. Another favorite is picnicking at **Clyde Beach Park** and then launching a kayak and paddling around **Meydenbauer Bay** to check out the continued progress being made on Meydenbauer Beach Park."

Grand Connection Design Framework Takes Shape

Bellevue's Grand Connection project envisions a transformative urban experience for Downtown and the future Wilburton area.

CONCEPT

The Grand Connection is a Bellevue City Council initiative which will create a non-motorized walking corridor that starts at Meydenbauer Bay, moves through Downtown Bellevue, and passes over the freeway to the Wilburton Commercial Area near the Bellevue Botanical Gardens and the Eastside Rail Corridor. Just imagine – soon you will be able to walk the entire distance without having to deal with car traffic!

BRING ON THE CREATIVITY

The Grand Connection design will feature three strategies: natural, playful, and collaborative and historical. All three

strategies aim to make an interactive, attractive and easy-to-use public space that connects key locations in Downtown Bellevue while celebrating elements of Bellevue's continuing history. Features will include art installations, community gardens and tech showcases.

DETAILS

The Grand Connection visioning process began in April 2016 after the selection of Balmori Associates as the lead design consultant.

Learn more and provide feedback on the concepts at www.bellevuegrandconnection.com



Rendering of Grand Connection.
Image: Balmori Associates

IN FOCUS: BELLEVUE FASHION WEEK

Local Designer Devon Yan Blends Artistry with Style

This year, the Bellevue Collection will host its 6th annual *Independent Designer Runway Show* where featured upcoming designers showcase their collections and compete for a cash prize courtesy of the Kemper Freeman Family and The Bellevue Collection.

Devon Yan, owner of DEVONATION, won the competition in 2016. Following last year's success, Devon has had a year of growth and experimentation. He shares with us his insights into his experience and journey.

Yan comes from a family of artists. With this background, his skilled artistry and success in the fashion industry seems a given. However, Yan's family, who knew how hard it would be for him to succeed in the industry, discouraged him from pursuing his artistic dreams and instead urged him to pursue a more practical career; business administration. Despite initially going into business, Yan never gave up; he taught himself to create beautiful clothes and eventually started a career in first Hong Kong, then Portland, and now Seattle.

Why did you move to the Pacific Northwest?

In the United States, I can design creatively in a way that I couldn't when I was in China and Hong Kong. Unlike back home, while there are certain styles that are popular here, deviating from the norm when designing is still encouraged. There is a market for what I create, even if it is out of the box.

What is the role of a designer?

Fashion is an expression of self. As a designer, it is important to see what 'can be' instead of what 'is.' Fashion can so easily be relegated to designing for what is currently popular, what is trending. I like to design something that hasn't been seen before.

How would you describe yourself?

I am often identified as a 'designer' but I see myself as an artist. I create art in many different mediums – fashion, graphic design, illustrating, painting, photography – and I don't want to limit myself in what I do. Combining elements from my various types of art makes each individual piece stronger.

*The best in fall fashion comes to life on the runway during **Fashion Week at The Bellevue Collection, September 20-24.** The *Independent Designer Runway Show* features this year at the Hyatt Regency Bellevue on September 21. Tickets available at fashionweekbellevue.com*

Devon Yan,
DEVONATION
devonyan.com

Photo:
Adam Burke



Do you have any advice for those interested in pursuing fashion design?

I often create designs based on the 'feel' of a piece – looking at the sensation of touch. I think it's incredibly important to remember to use all five senses when designing.

In another vein, my experience has taught me that being an artist can be lonely. I always remind myself that loneliness is okay. It is temporary. I use it to fuel my work but then I know that I can reach out to my friends and family. It's also okay to be a 'loser' – to make mistakes and to have failures.

I have learned to give myself time, to figure out my own weaknesses, and to use my failures to improve myself.

How do you define success? What are your dreams for the future?

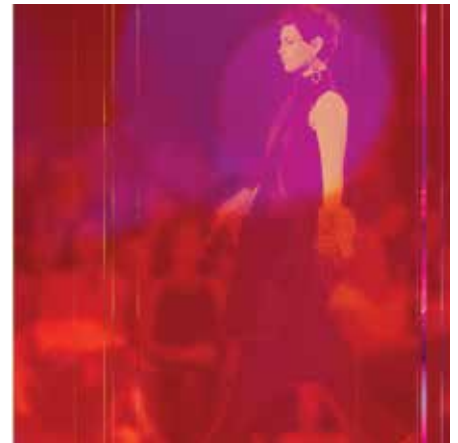
For me, success isn't about money, recognition or sales – it's about that 'one minute' when I see my collection lined up on all the models before they walk the runway. If you were to ask me which collection was my favorite, or which collection was the best, I would always tell you that it is the next one that I'm currently working on. I always strive to make each collection better than the last.

In regards to the future, I am an artist but I am also practical. My next dream is to open a private studio for me to continue to create art and fashion. I'm taking everything one step at a time and waiting for the right time. Once I achieve that, then I will let myself dream bigger.

Last year, you won The Bellevue Collection's Independent Designer Runway Show. How did this influence your goals?

Fashion Week at the Bellevue Collection is very well-regarded in the industry and winning the Runway Show helped me to make a lot of connections and to give my work a more public pedestal.

Model Trinity Taylor Bree showcases a DEVONATION piece.
Photo credit: Michael B. Maine



FASHION WEEK

AT THE BELLEVUE COLLECTION SEPT. 20-24

SEPT. 21 INDEPENDENT DESIGNER RUNWAY SHOW
SEPT. 22 POSH PARTY TREND SHOW
SEPT. 23 THE COLLECTIVE RUNWAY SHOW

For show tickets and information on all fashion events, visit: fashionweekbellevue.com

BELLEVUE SQUARE BELLEVUE PLACE LINCOLN SQUARE

Downtown East Link Light Rail Construction and Pedestrian Access

The end of summer brings a closure with a slightly smaller footprint than what was previously in place.

City Center's parking garage access from 110th Avenue will be maintained during construction. As you may recall, last summer Sound Transit's tunneling contractor closed a portion of 110th Avenue to prepare the soil underneath the roadway for tunneling and construction of the north tunnel portal. At that time, parking access was closed.

Sound Transit is also planning a longer-term full closure for vehicular and bicycle traffic in both directions of a portion of 110th Avenue between NE 4th and NE 6th streets to construct the north tunnel portal near Bellevue City Hall.

The closure on 110th Avenue will begin in late August and will occur in multiple phases:

Phase 1 (approximately late August 2017 – Spring 2018):

Scheduled to last approximately nine months, phase 1 will require the closure of all lanes on 110th Avenue in both directions within the work area from Northeast 6th Street to just short of the entrance to the City Center garage between Northeast 6th and 4th Streets. A temporary crosswalk will be constructed south of the work zone across 110th Avenue to accommodate a pedestrian detour as a portion of the eastern sidewalk along 110th Avenue will be closed. Pedestrian access to City Hall will be maintained.

Phase 2 (approximately Spring 2018 – Winter 2018):

One lane of traffic will be reopened in both the north and southbound direction.

Phase 3 (approximately Winter 2018 – Spring 2019):

Phase 3 will again require a full closure of all lanes on 110th Avenue Northeast in the work area as utilities are reinstalled and the roadway is restored.



Our TransManage team at the BDA encourages you to try transit whenever possible, and enjoy the summer by walking to your downtown destination! Visit www.ChooseYourWayBellevue.org for more information on how you may be eligible to claim a free, pre-loaded \$25 ORCA Card when you try transit this summer, or request your very own pedestrian guide outlining downtown's destinations by foot! Feel free to contact info@cywb.org with commute-related questions.



Periodic lane closures and a long-term sidewalk closure on the south side of NE 6th Street will also be required to perform utility work and construction of the Bellevue Downtown Station.

Construction schedules are fluid and subject to change. More specific information regarding the timing of each phase will be provided by Sound Transit as construction advances.

Sign up for Sound Transit construction alerts at <https://www.soundtransit.org/subscribe-to-alerts> for the latest information.

Be Nice to Fish!

USE A COMMERCIAL CAR WASH TO PREVENT POLLUTION



Wash Cars Not Fish!

#BELLEVUEFISH 



streamteam@bellevuewa.gov