

# PREPARING YOUR BUILDING

For Back to Work in the Era of COVID-19

Hermanson is a COVID-19  
Essential Service Provider

 **Hermanson**

 **Hermanson**  
Building Today, Defining Tomorrow

Mechanical, Construction, Engineering, and Service  
**206-575-9700 (24 hrs)**  
[www.hermanson.com](http://www.hermanson.com)

 **Hermanson**  
Building Today, Defining Tomorrow

7700



**GMC**

7700

# A FOUR-PRONGED APPROACH

Hermanson recommends a four-pronged approach to preparing your building for the return of residence, tenants and visitors.

Flush

Filter

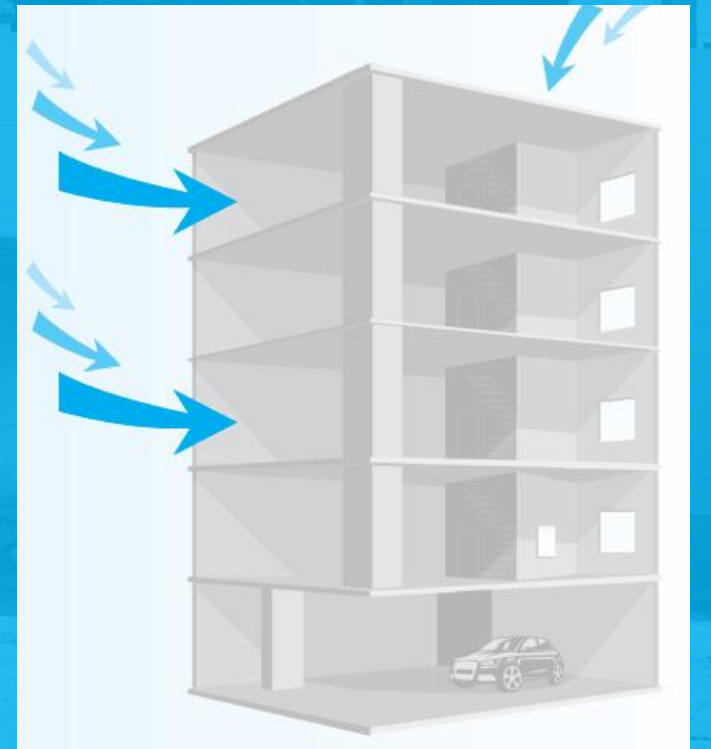
Clean

Maintain

# WHY FLUSH?

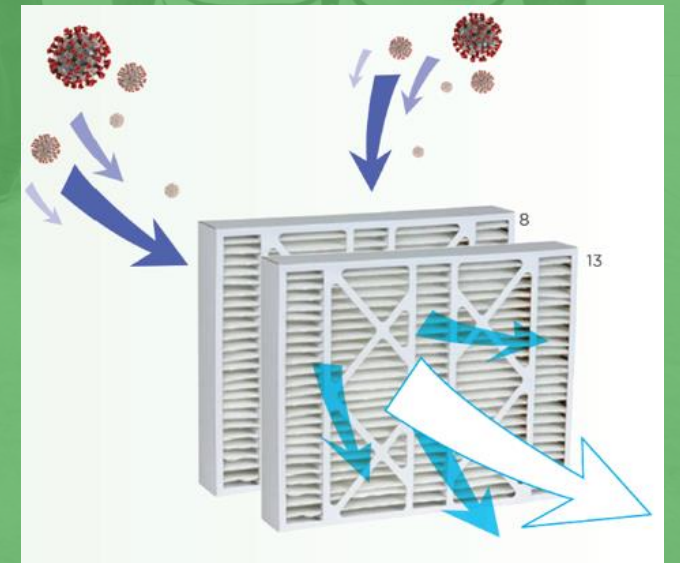
---

ASHRAE recommends flushing a building with as much outside air as possible to remove pathogens.



# WHY FILTER?

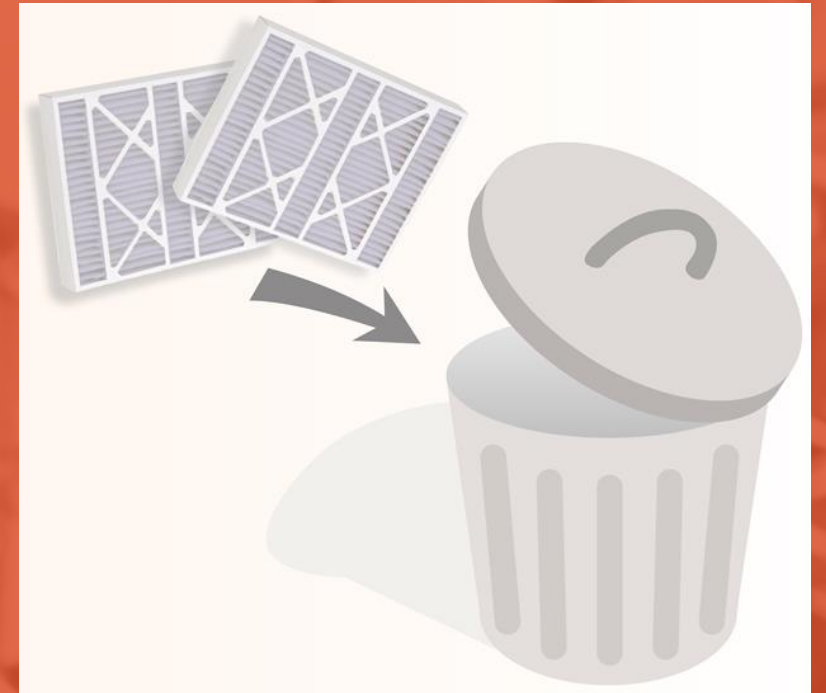
The National Air Filtration Association (NAFA) sets standards and guidelines for the filtration of particulates and pathogens in HVAC systems.



# WHY CLEAN?

---

The CDC and OSHA set guidelines and regulations for cleaning protocols related to infectious disease control.



# WHY MAINTAIN?

---

The combination of regular and periodic maintenance ensures equipment fully provides adequate ventilation and improves indoor air quality and safety.





The information presented during this webinar is current as of the date presented.

Hermanson will endeavor to keep you informed of changes, new information and guidelines as they become available.



# Contact for further information:



**Geoff Vestman**

Business Development  
Manager Service

**206-462-8341**

[gvestman@Hermanson.com](mailto:gvestman@Hermanson.com)

**Hermanson is a COVID-19 Essential Service Provider**