



Bellevue Downtown Association Downtown Bike Series

Meeting 1: Introduction & Information

Franz Loewenherz

Andreas Piller

Kyle Potuzak

Chris Long

September 28, 2017



BELLEVUE
**PEDESTRIAN
& BICYCLE**
IMPLEMENTATION INITIATIVE

Today's Agenda:

- 1) *Meeting Purpose*
- 2) *PBII Overview*
- 3) *BDA Consultative Process*
- 4) *Next Steps: Bike Share*
- 5) *Next Steps: Demo Corridor*

The BDA has asked the Bellevue Transportation Department to engage in a timely discussion about how to make Downtown a comfortable, safe, and attractive place for people to bike.



- **BDA Transportation Committee will conduct an internal review and discussion, followed by driving consensus on a recommendation.**
- **The recommendation will be presented to the BDA Board of Directors (12/19).**
- **The Board will vote on a position that will be communicated to the Bellevue Transportation Commission.**



Microsoft



BELLEVUE
**PEDESTRIAN
& BICYCLE**
IMPLEMENTATION INITIATIVE

Meeting Purpose



BELLEVUE
**PEDESTRIAN
& BICYCLE**
IMPLEMENTATION INITIATIVE

Meeting Purpose



BELLEVUE
**PEDESTRIAN
& BICYCLE**
IMPLEMENTATION INITIATIVE

Meeting Purpose



BELLEVUE
**PEDESTRIAN
& BICYCLE**
IMPLEMENTATION INITIATIVE

Meeting Purpose

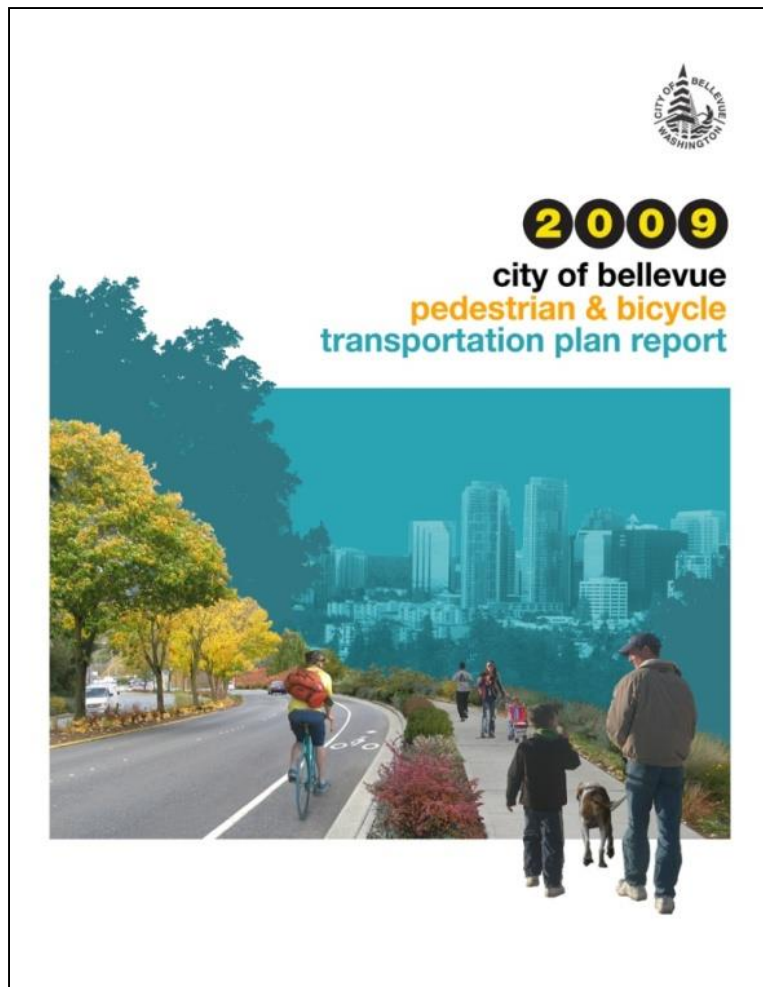


BELLEVUE
**PEDESTRIAN
& BICYCLE**
IMPLEMENTATION INITIATIVE

Meeting Purpose

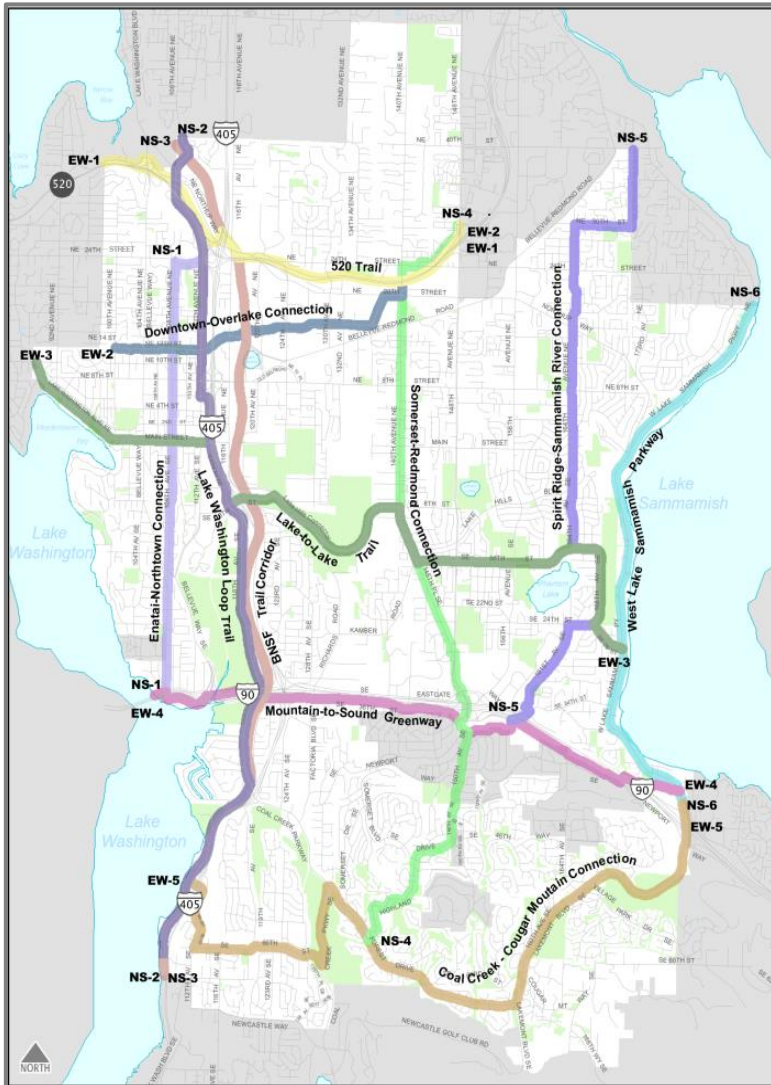


Meeting Purpose



Ordinance No. 5861 (2/17/2009)

- Formulated vision, goals, objectives.
- Assessed gaps in the non-motorized network.
- Established performance targets.



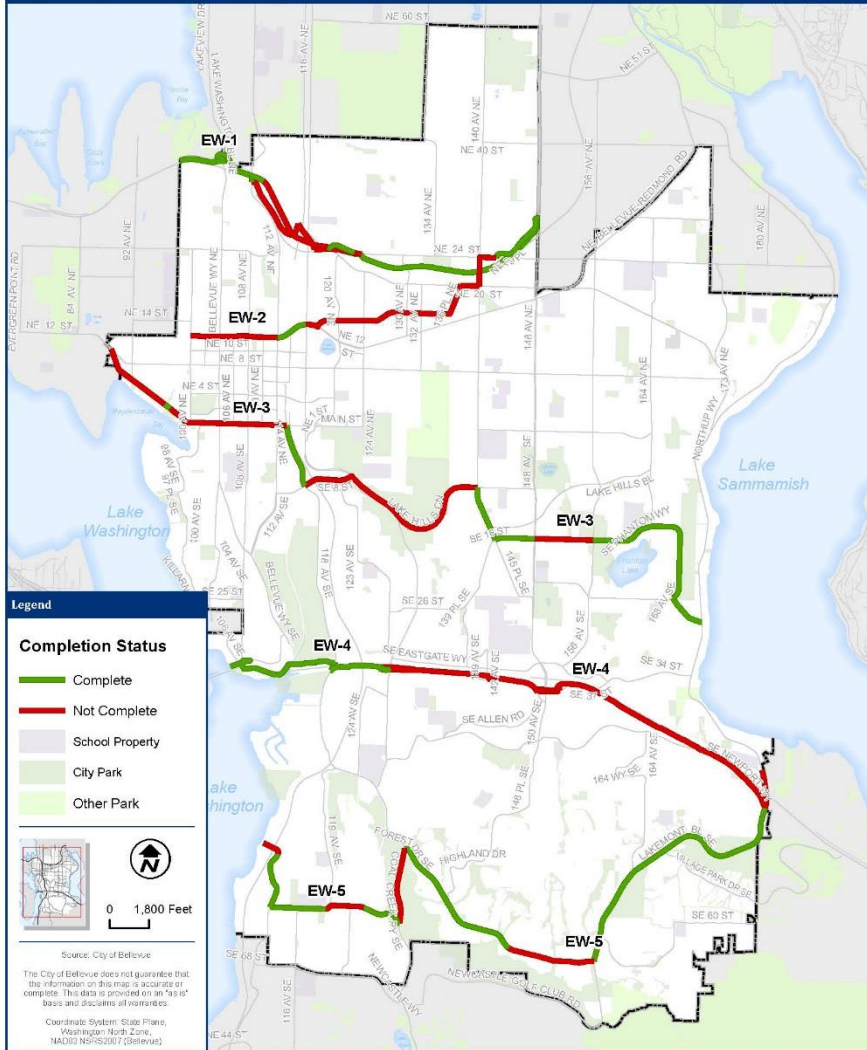
2019 Performance Target:

“Within 10 years, implement at least two completed, connected, and integrated north-south and at least two east-west bicycle routes that connects the boundaries of the city limits, and connects to the broader regional bicycle system.”

- 2009 Pedestrian & Bicycle Transportation Plan

E-W Priority Bicycle Corridors Completion Status

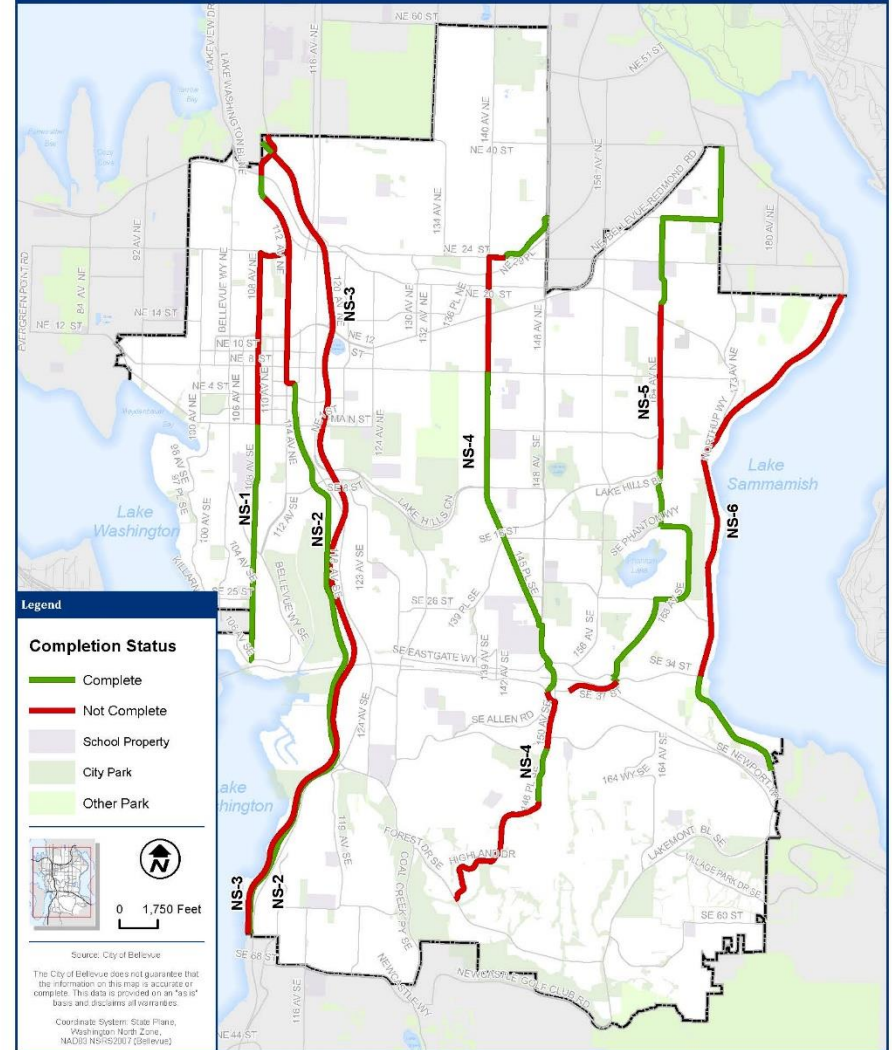
With Bicycle Projects completed 2009-2016



File Name: B:\Bicycle\GIS\Shape\Planning\Facilities\Bicycle\Corridors\CompletionStatus\Presets\etom\EW_PBC_Sha_2009-2016.mxd

N-S Priority Bicycle Corridors Completion Status

With Bicycle Projects completed 2009-2016

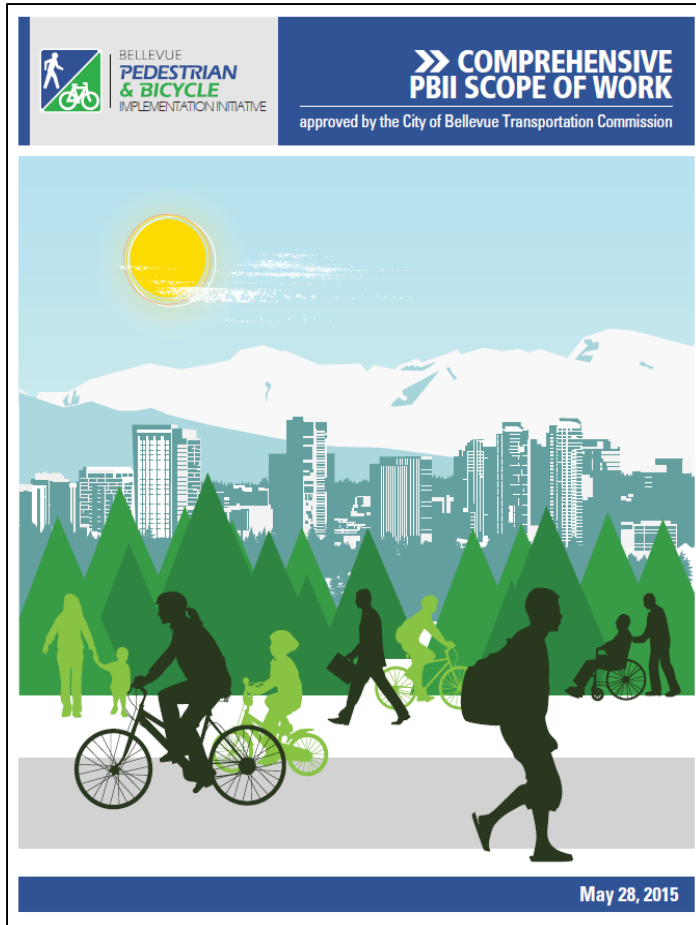


File Name: B:\Bicycle\GIS\Shape\Planning\Facilities\Bicycle\Corridors\CompletionStatus\Presets\etom\NS_PBC_Sha_2009-2016.mxd



BELLEVUE
**PEDESTRIAN
& BICYCLE**
IMPLEMENTATION INITIATIVE

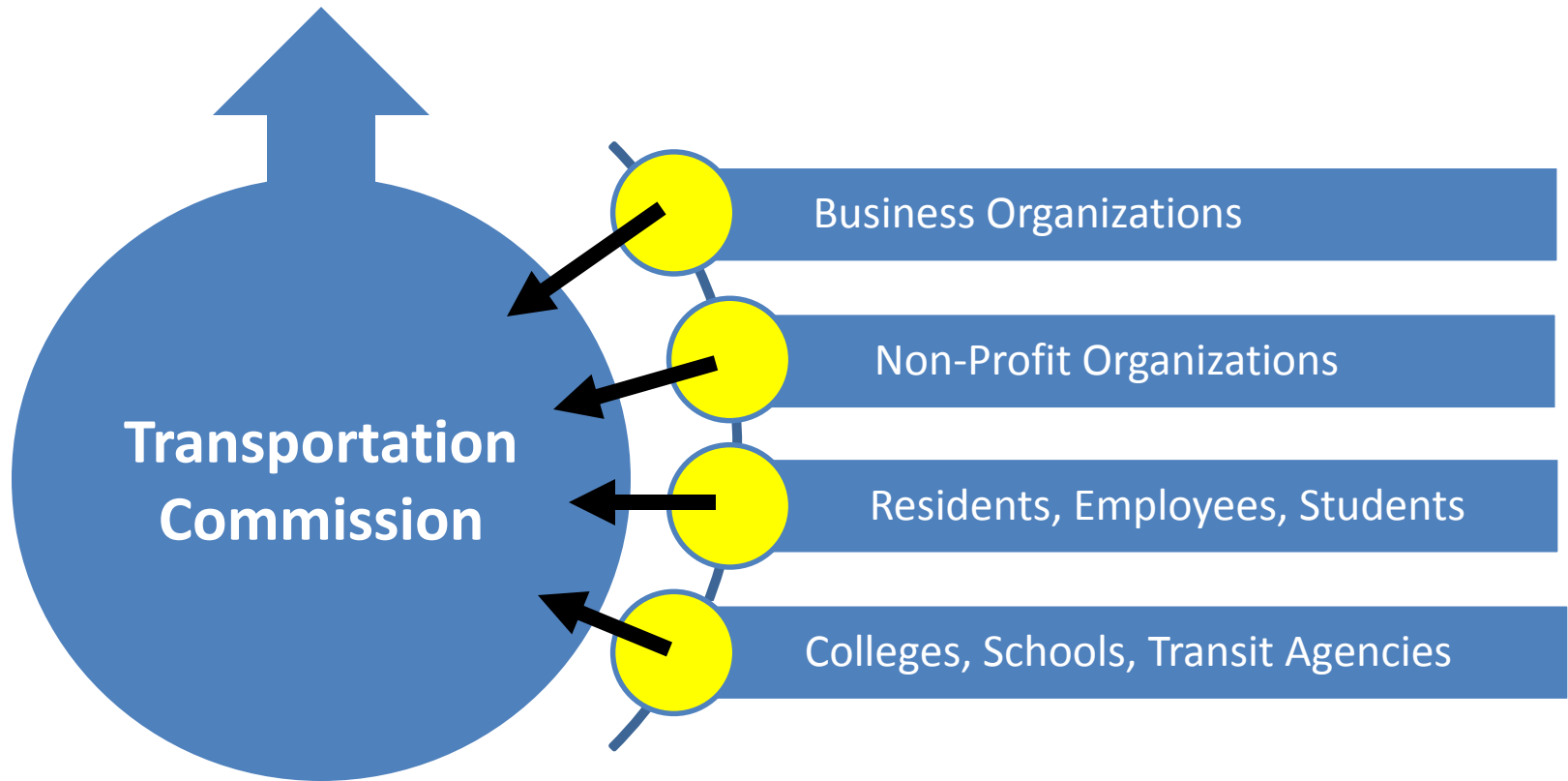
Priority Bicycle Corridors



“Engage community stakeholders in setting the priorities for investment in non-motorized facilities.”

- Council Program Principle(s)

Bellevue City Council





“The separated lane is very attractive for safety reasons. My greatest concern is the taking of scarce roadway space for a limited user base.” – Lampe



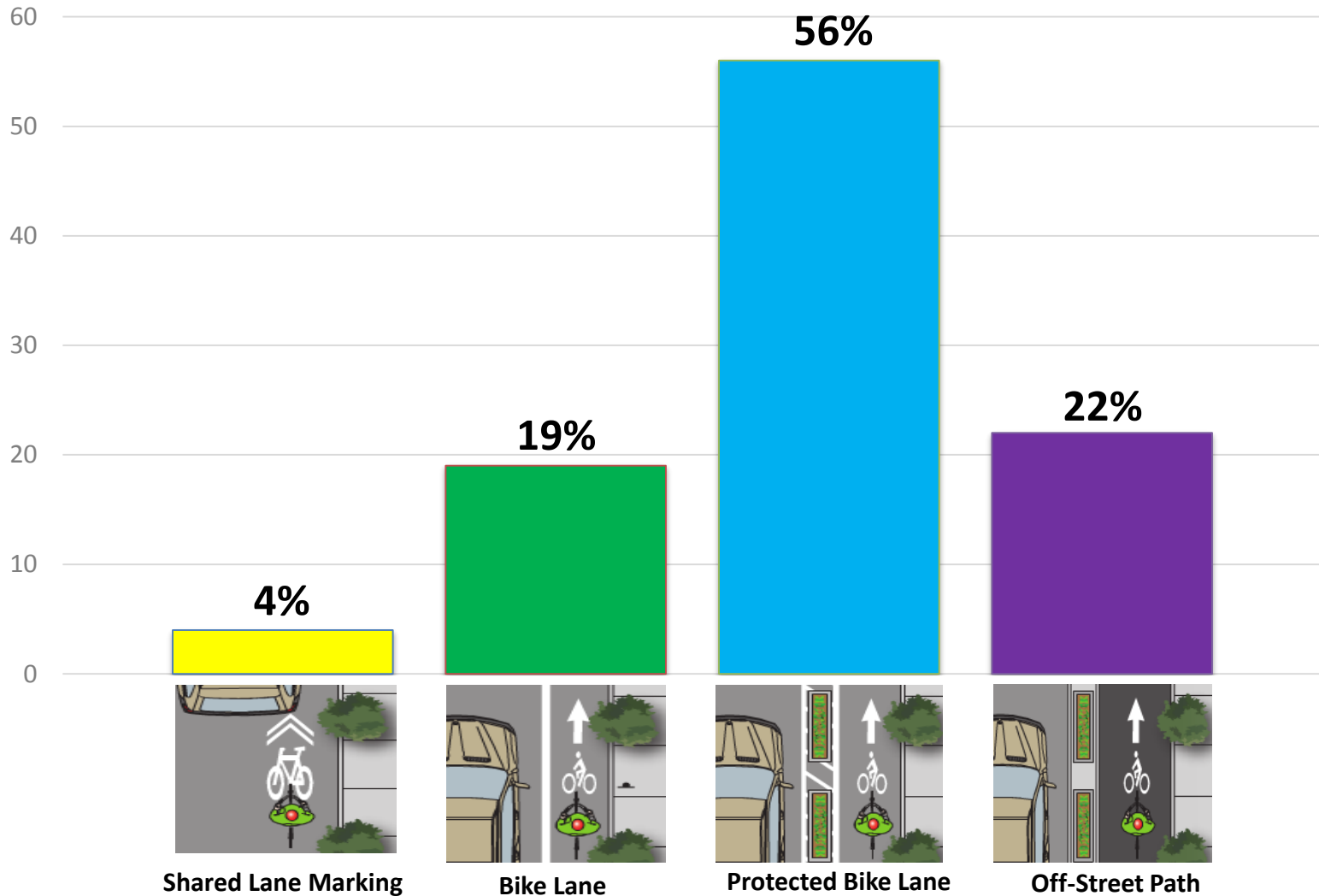
“Separating the biker from traffic is a given.... We provide it for cars to prevent accidents. We should provide it for bikers given the imbalance in protection.” – Barksdale



BELLEVUE
**PEDESTRIAN
& BICYCLE**
IMPLEMENTATION INITIATIVE

Board & Commission Mtg (8/18/15)

Which of these types of facilities would encourage you/your employees to bike in Downtown Bellevue?



BELLEVUE
**PEDESTRIAN
& BICYCLE**
IMPLEMENTATION INITIATIVE

BDA Board Results (10/25/15)



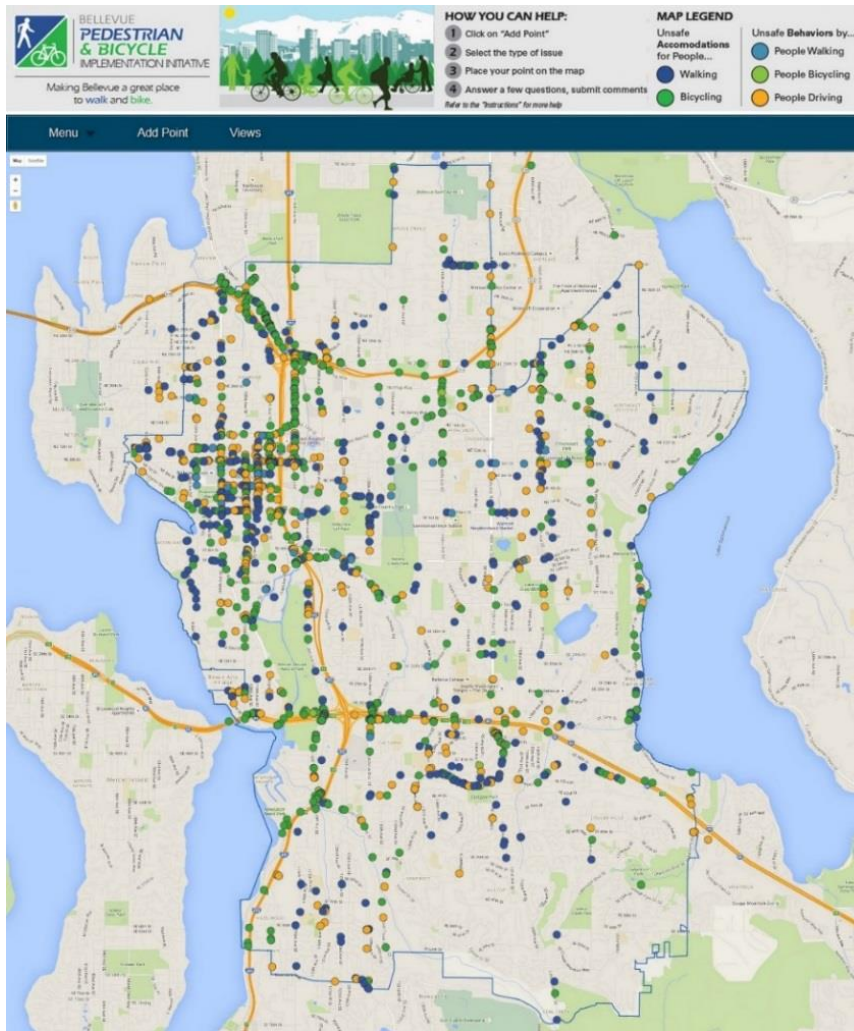
“Downtown Bellevue is not an area where the faint of heart would choose to ride; that said, it is prime for investment to attract additional riders. What’s needed are safe and inviting bicycle facilities that are separated from the auto.”

- Karen Doherty, Senior Vice President, Puget Sound Area Manager of HDR

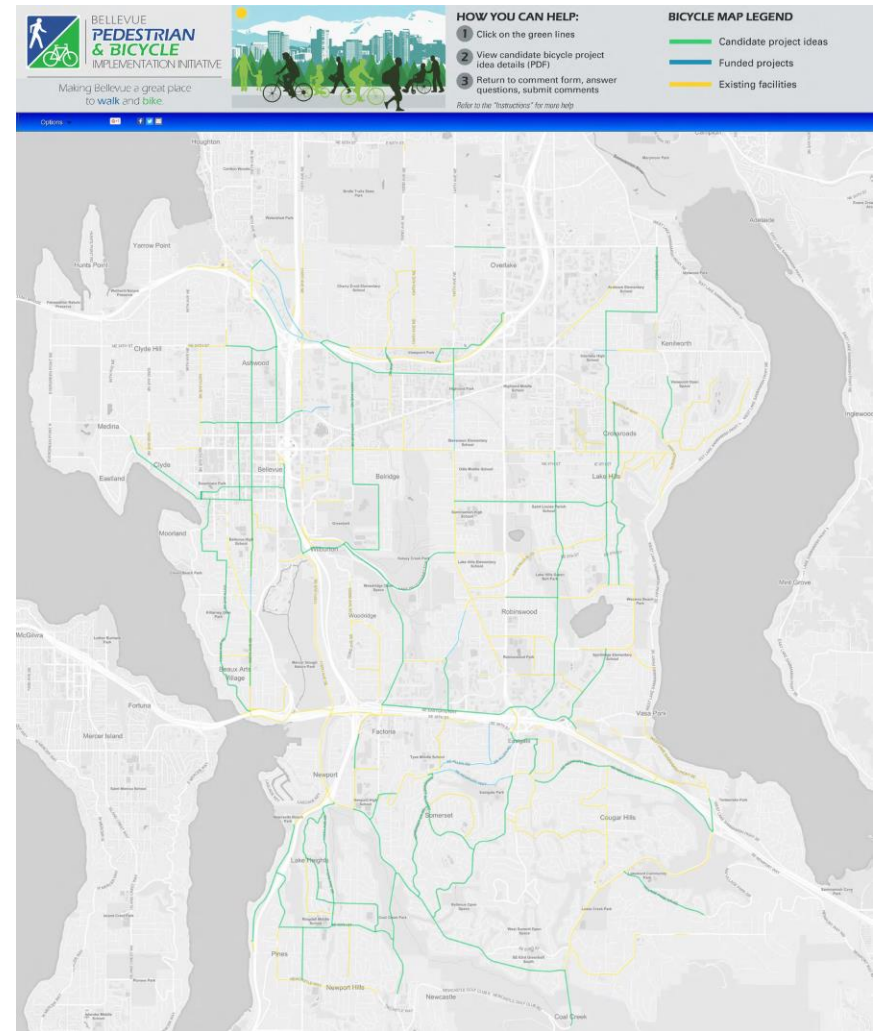


BELLEVUE
**PEDESTRIAN
& BICYCLE**
IMPLEMENTATION INITIATIVE

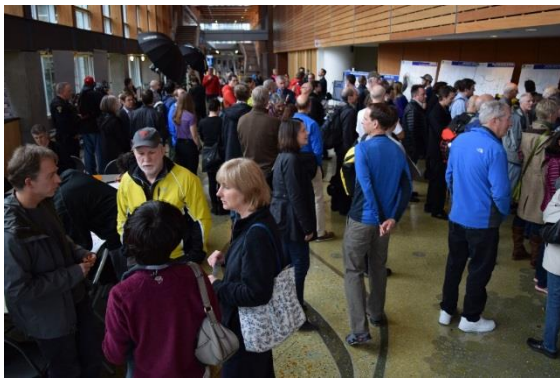
Stakeholder Interviews



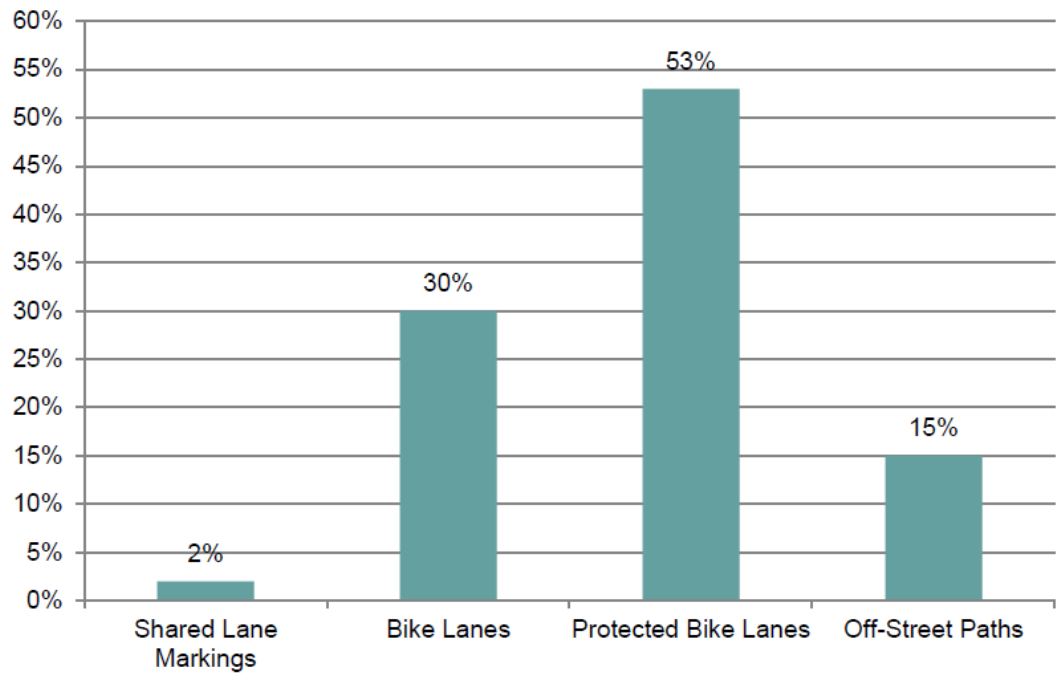
Fall 2015: Locations that feel unsafe for people walking and bicycling.



Spring 2016: Comments on 52 project ideas being considered in the BRIP.



Which of these types of facilities would encourage you to bicycle in Bellevue?	Responses	
	Percent	Count
Shared Lane Markings	2%	3
Bike Lanes	30%	37
Protected Bike Lanes	53%	66
Off-Street Paths	15%	18
Total		124



» BICYCLE RAPID IMPLEMENTATION PROGRAM

project ideas and conceptual layouts

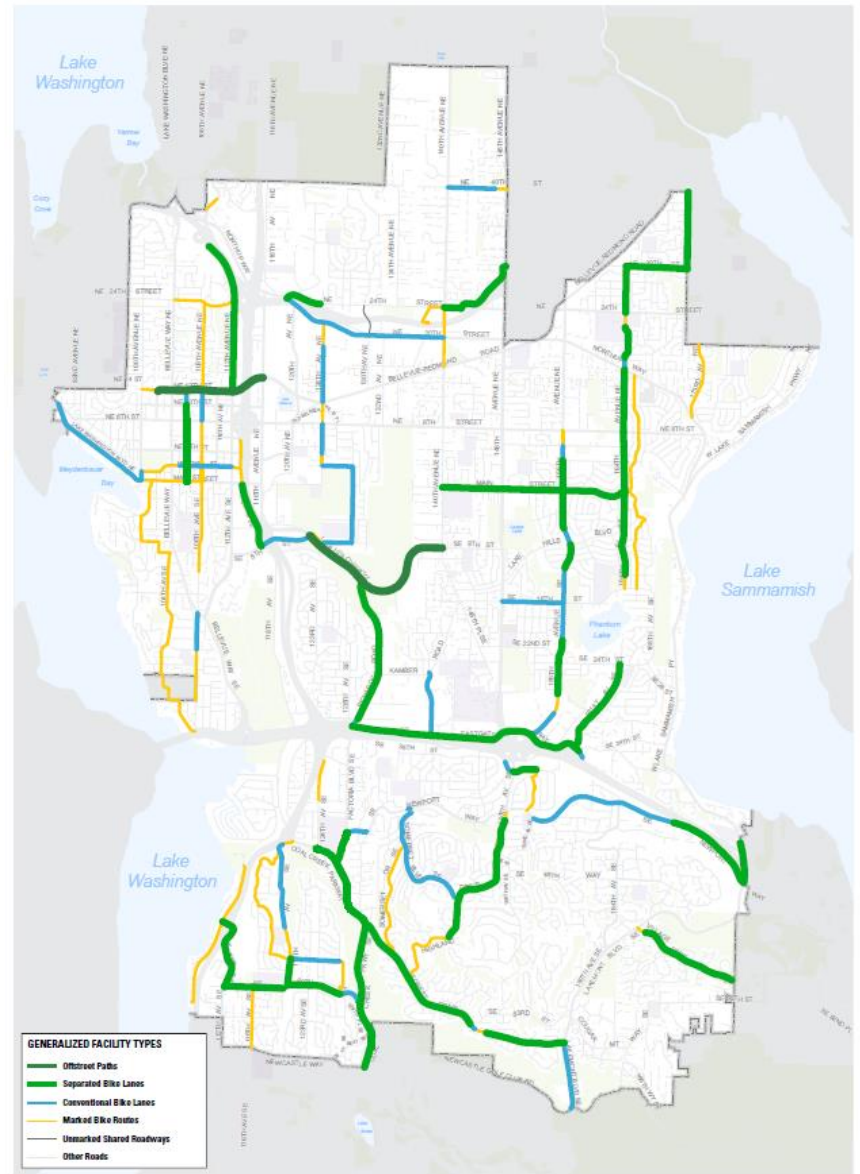
DRAFT



April 2016



BELLEVUE
**PEDESTRIAN
& BICYCLE**
IMPLEMENTATION INITIATIVE



BRIP Report (April 2016)



“We strongly urge you to prioritize funding for a complete, connected 57 mile network of bike/ped infrastructure throughout Bellevue, emphasizing protected bike paths as much as possible.”

- Eric Artz, Chief Operating Officer



“We support increased investment in bicycling infrastructure and taking rapid action on the following projects ...”

- Al Kinisky, Senior Director of Real Estate



Seattle Children's
HOSPITAL • RESEARCH • FOUNDATION

“... the Bicycle Rapid Implementation plan is a cost-effective strategy to help transform Bellevue into a safe and inviting urban center for bicyclists and vital for improving station access in preparation for Sound Transit's East Link....”

- Lisa Brandenburg, President

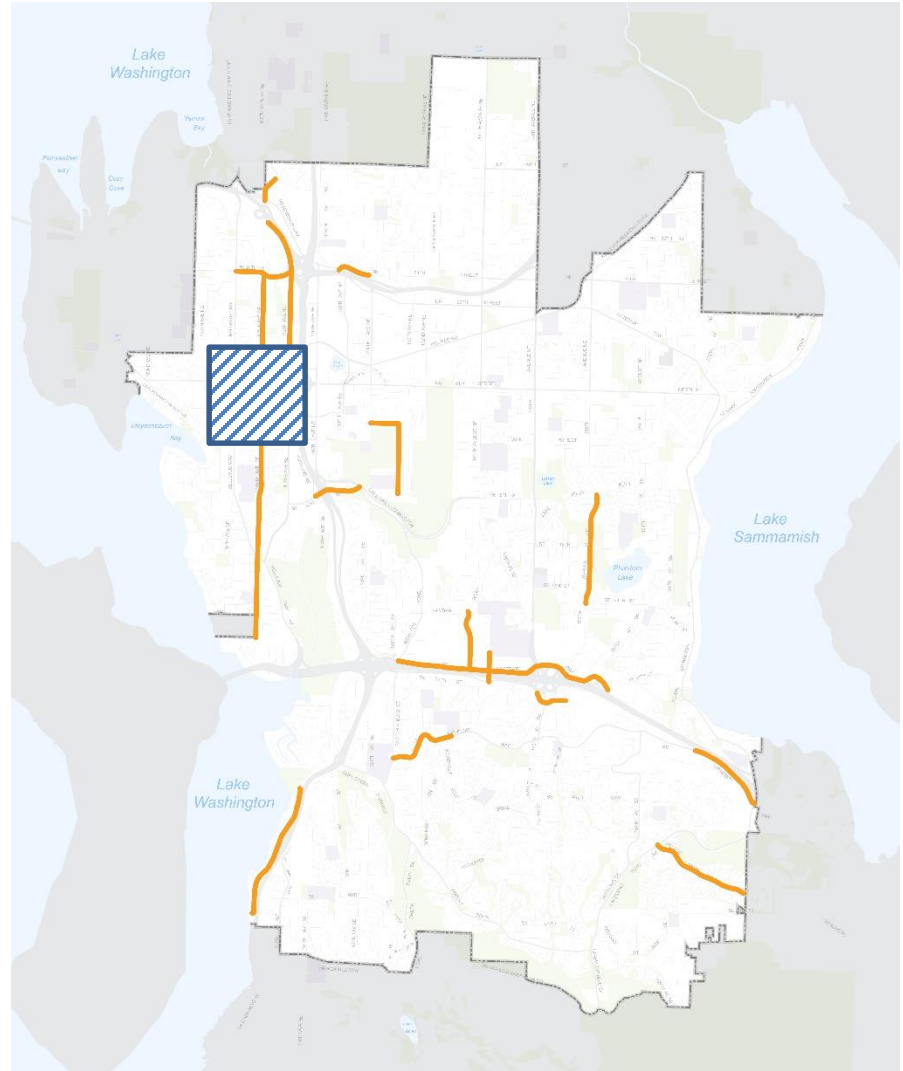


Business Community (April 2016)

NEIGHBORHOOD LEVY PROJECT



In 2017-2018, the BRIP program will leverage roughly \$1.7M of funding from the Transportation Levy.



BELLEVUE
**PEDESTRIAN
& BICYCLE**
IMPLEMENTATION INITIATIVE

Levy Funding (November 2016)

9/28/17
Committee

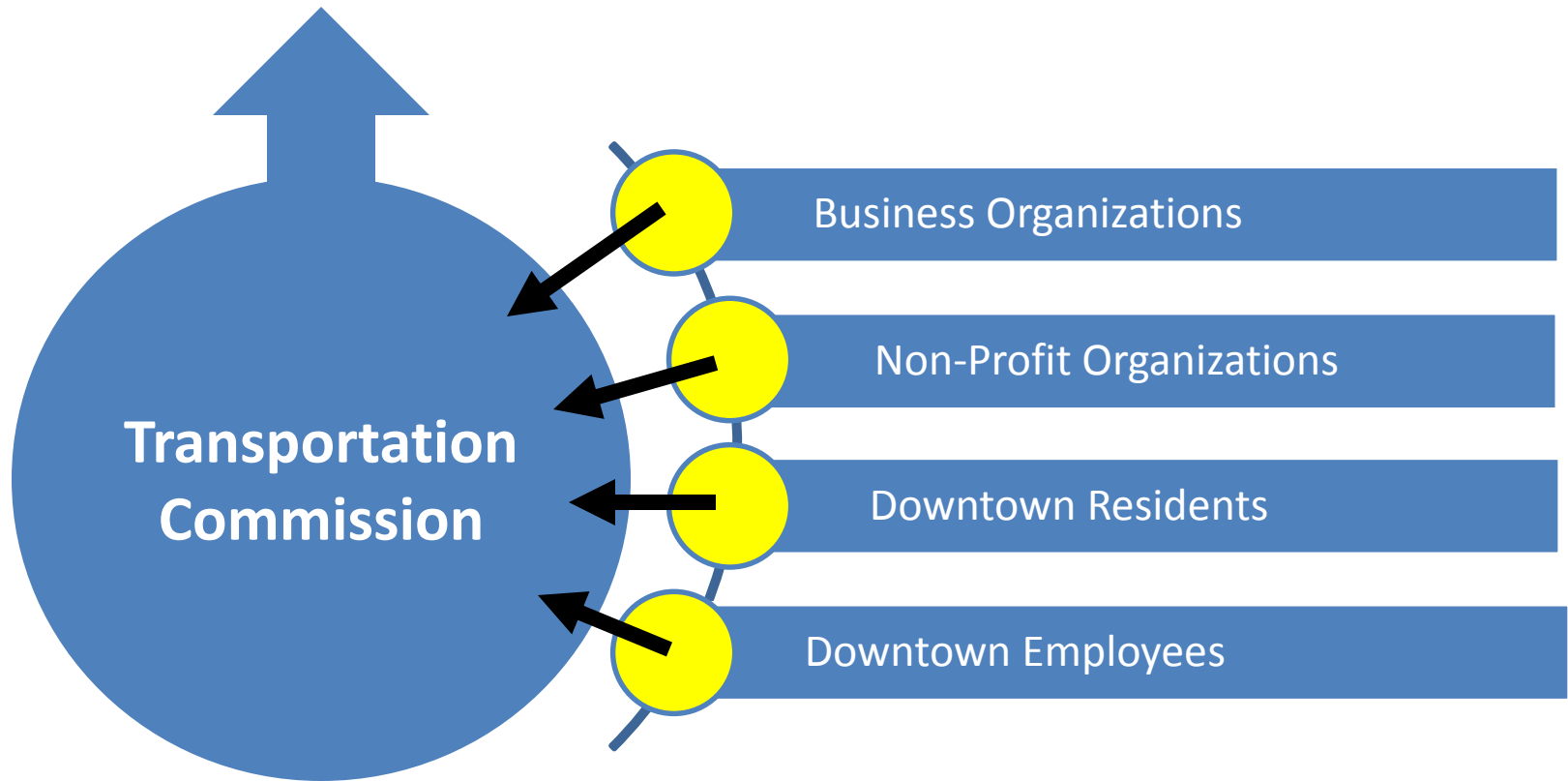
10/26/17
Committee

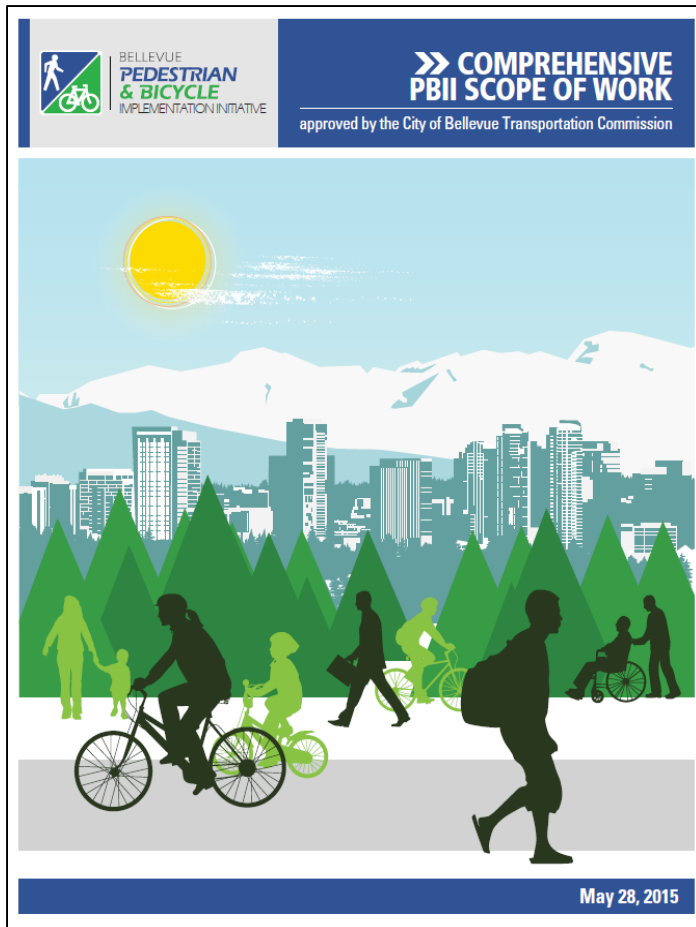
11/16/17
Committee

12/19/17
Board

- **Bike Share**
- **Demonstration Bikeway Project**
- **Downtown Bicycle Network**

Bellevue City Council





“Provide people in Bellevue access to a bicycle when they want one, without having to worry about storage, security, and maintenance.”

- PBII Scope of Work

Bike share is...

Shared Fleet



Point-to-Point



Short Term



Spontaneous



Transportation



Recreation

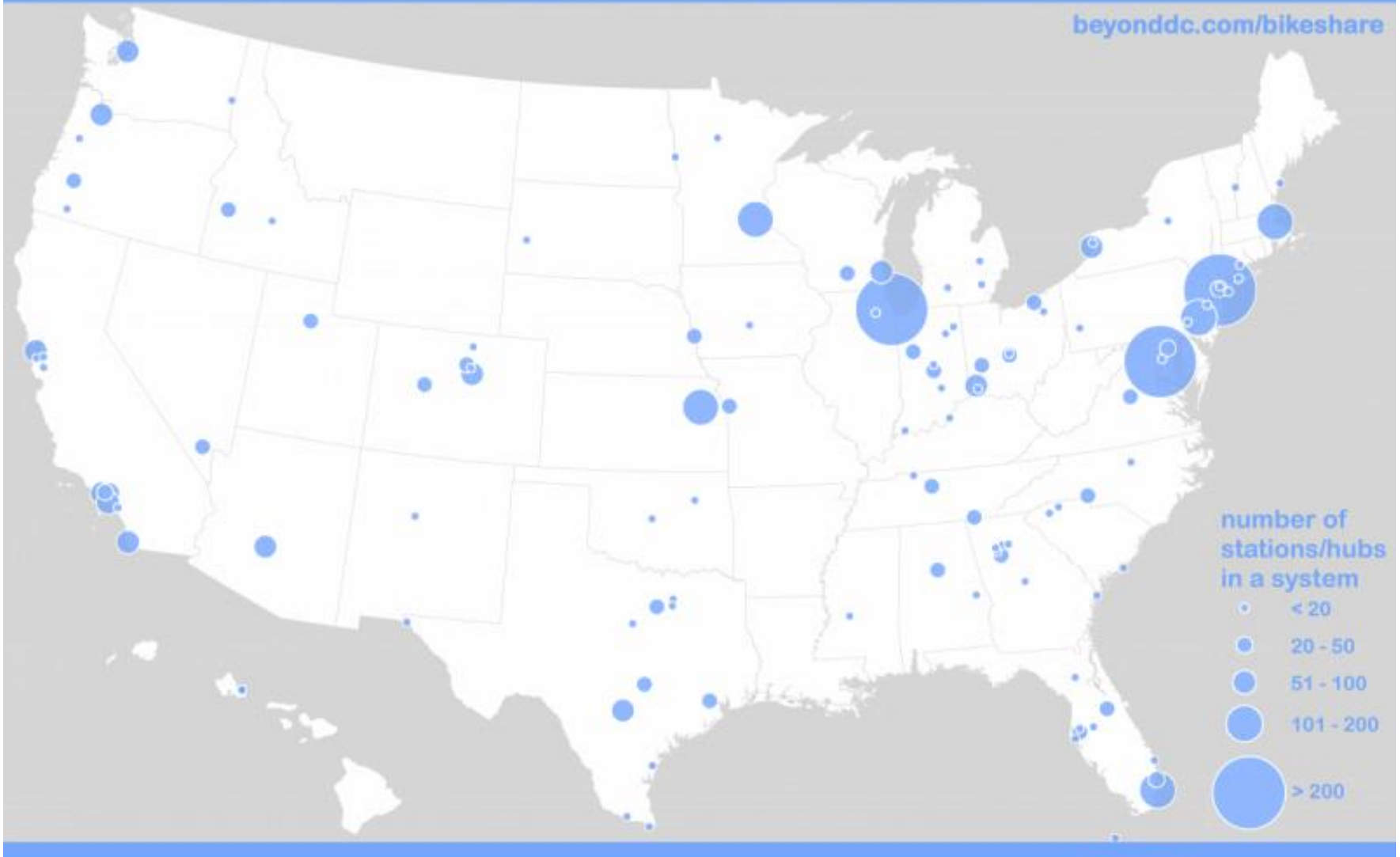


Not Long
Term Rental



BELLEVUE
**PEDESTRIAN
& BICYCLE**
IMPLEMENTATION INITIATIVE

What is Bike Share



119 cities with bikeshare

4789 total nationwide stations/hubs



Data as of January 2017. Stations and hubs are not exactly synonymous; bikeshare technology is diverse.



BELLEVUE
**PEDESTRIAN
& BICYCLE**
IMPLEMENTATION INITIATIVE

United States of Bike Share



Why Use Bike Share?

- Convenience
- Expedience
- Expanded Range
- Flexibility
- Improved Access to Transit
- Enjoyment
- Bike Mobility without...
 - Maintenance
 - Parking/Storage
 - Planning Ahead

Station-Based



Hub-Based



Free-Floating



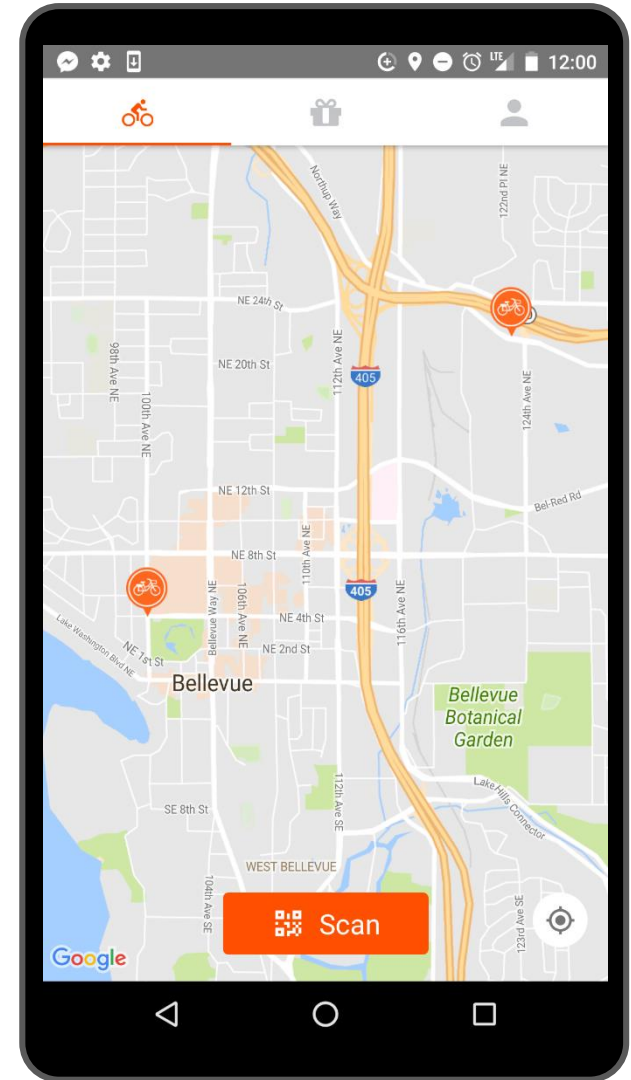
BELLEVUE
**PEDESTRIAN
& BICYCLE**
IMPLEMENTATION INITIATIVE

Types of Bike Share



Bike Share Permit Requirements:


- Safety
- Parking
- Operations
- Data Sharing
- Fees
- Application





BELLEVUE
PEDESTRIAN
& BICYCLE
IMPLEMENTATION INITIATIVE

Bicycling and Bike Share in Bellevue

9. If a bike share service was available in Bellevue today, would you use bike share in Bellevue? 

- ☐ Yes, I would use bike share in Bellevue
- ☐ No, I would not use bike share
- ☐ I don't know

Please explain why or why not.

10. If a bike share service was available in Bellevue today, in which parts of the city would you use bike share? 

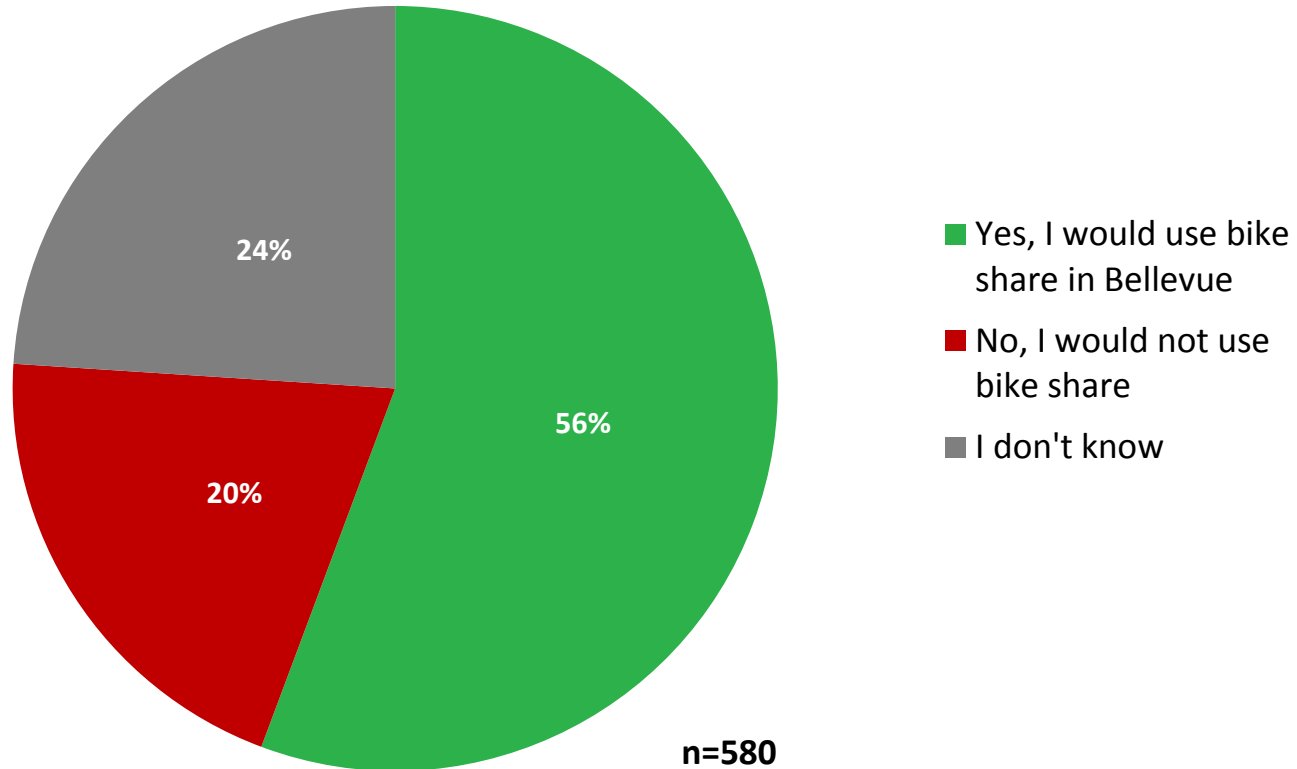
☐ Downtown Bellevue



BELLEVUE
PEDESTRIAN
& BICYCLE
IMPLEMENTATION INITIATIVE

Bicycling and Bike Share Survey

If a bike share service was available in Bellevue today, would you use bike share in Bellevue?

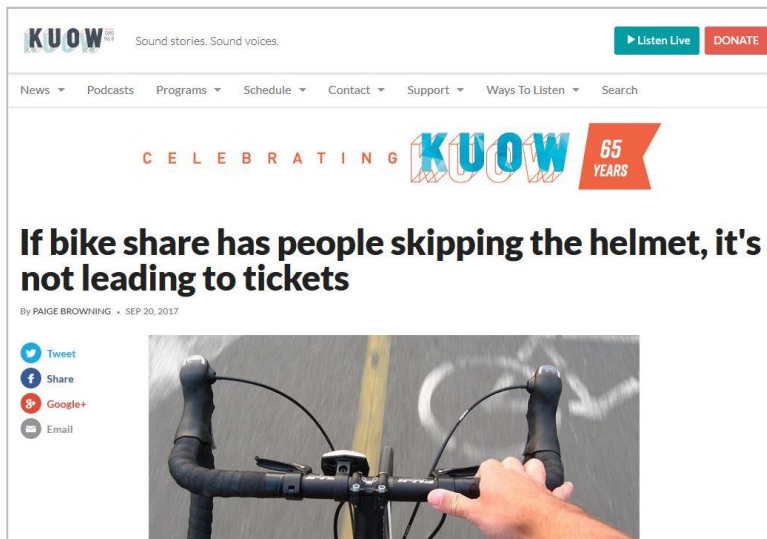
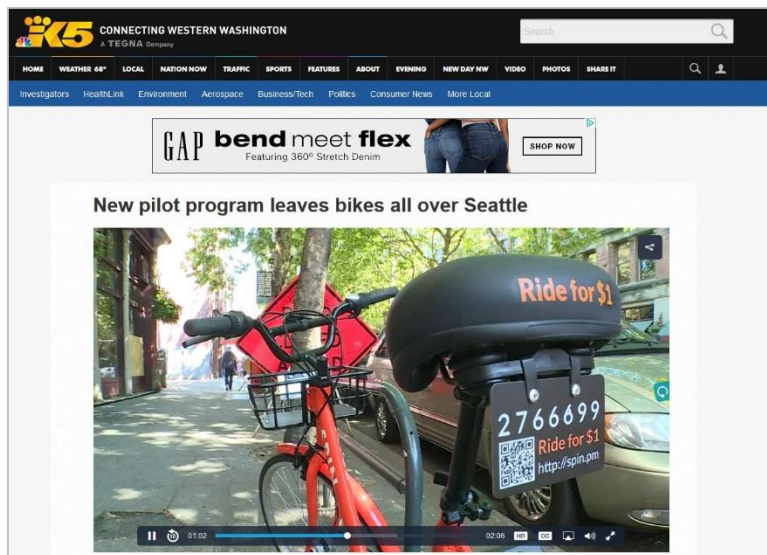




BELLEVUE
**PEDESTRIAN
& BICYCLE**
IMPLEMENTATION INITIATIVE

Eastside Bike Share Vendor Fair





Common Concerns

- Public Investment
- Helmet Law
- Safety
- Aesthetics
- Vandalism



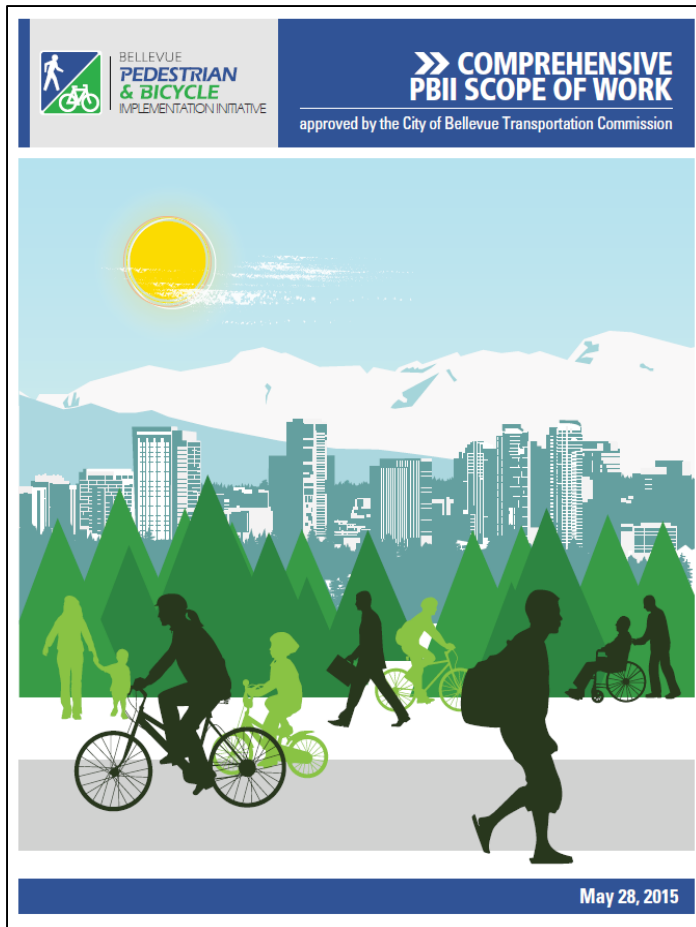
BELLEVUE
**PEDESTRIAN
& BICYCLE**
IMPLEMENTATION INITIATIVE

Common Concerns



Initial Feedback?

1. Questions/concerns?
2. Should we permit private companies to operate bike share in Bellevue in 2018?



“Advance the implementation of Bellevue’s planned Bicycle Priority Corridors to facilitate continuous bicycle travel along a connected grid of safe facilities throughout the city and the region.”

- Council Program Principle(s)



RAPID



LOW-COST



ASSESSMENT



BELLEVUE
**PEDESTRIAN
& BICYCLE**
IMPLEMENTATION INITIATIVE

Demonstration Bikeway Project



Chicago



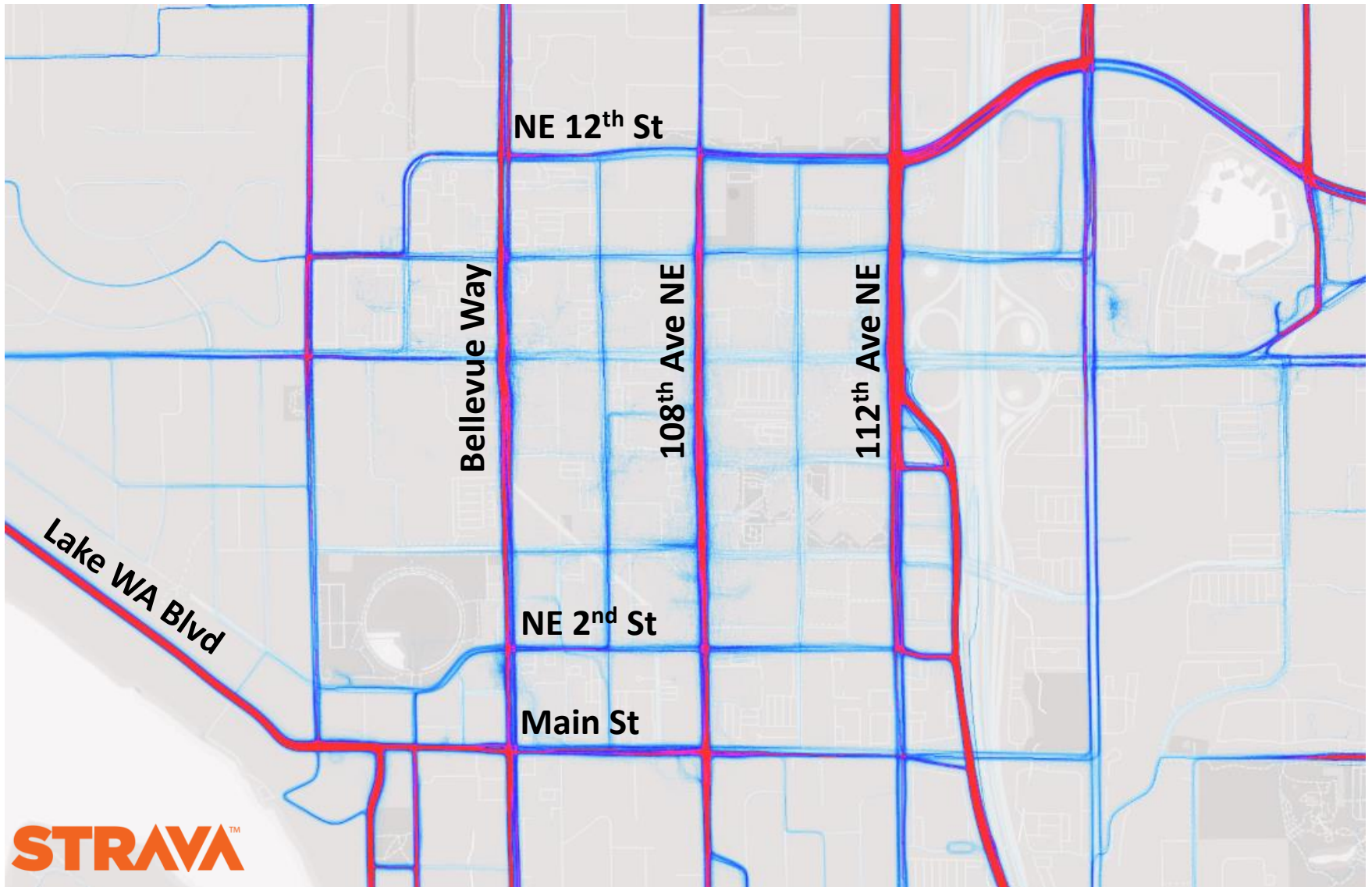
Austin



Washington, DC



Pittsburgh



BELLEVUE
**PEDESTRIAN
& BICYCLE**
IMPLEMENTATION INITIATIVE

Where People Ride



- 
- BELLEVUE
**PEDESTRIAN
& BICYCLE**
IMPLEMENTATION INITIATIVE

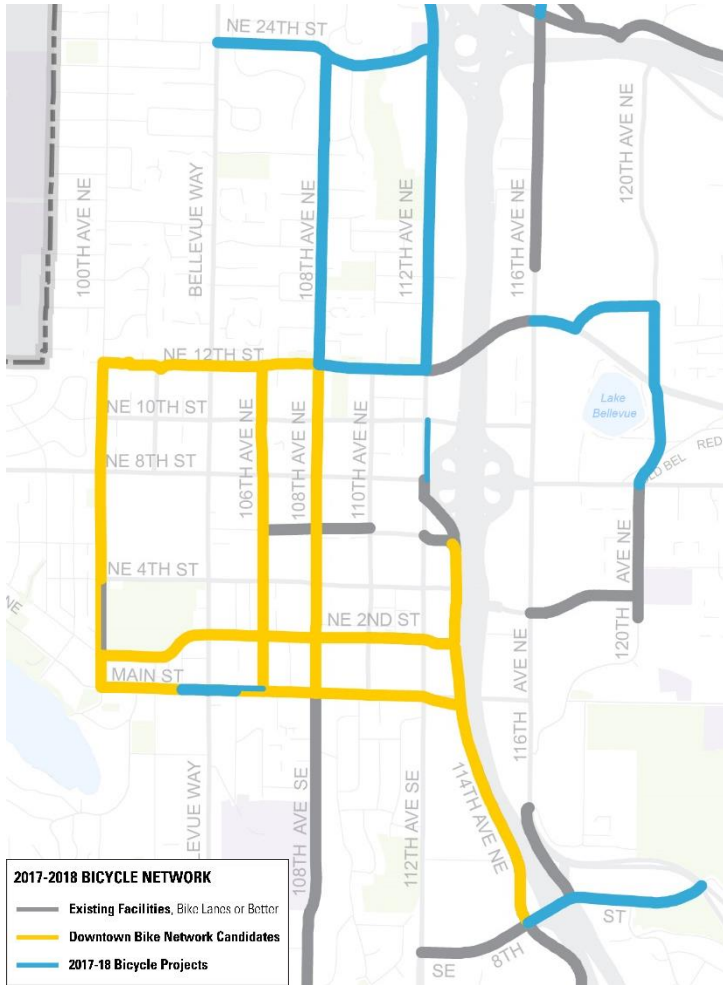
Downtown Bicycle Network Candidate Corridors:

North-South

- 100th Ave NE
- 106th Ave NE
- 108th Ave NE
- 114th Ave

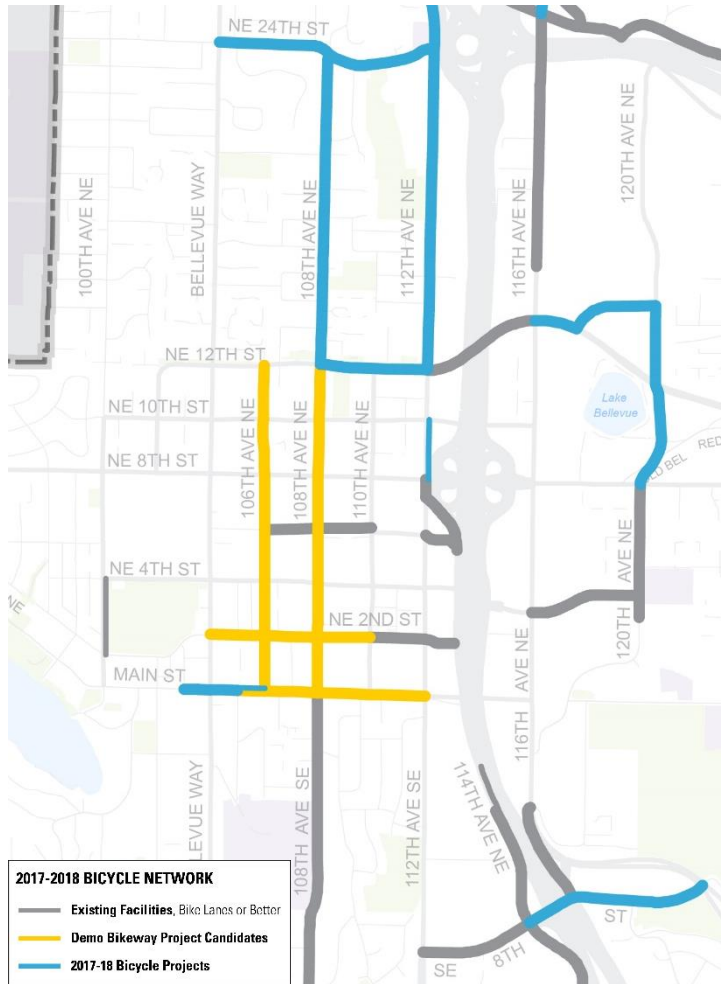
East-West

- Main St
- NE 2nd St
- NE 12th St



Demonstration Bikeway Project Candidate Corridors:

- **108th Ave NE**
Main St to NE 12th St
- **Main St**
105th Ave to 112th Ave
- **NE 2nd St**
106th Ave NE to 110th Ave NE
- **106th Ave NE**
Main St to NE 12th St



Did we miss something?

Bicycle Improvements

- Existing bike network connections
- High comfort bikeway
- Consistency with community feedback

Street Use Impacts

- Travel lanes repurposed
- Turn lanes repurposed
- Changes to on-street parking
- Transit operation challenges

Land Use

- Construction activity
- Driveways

Next Steps: Share Assessment @ 10/26 BDA Meeting



BELLEVUE
**PEDESTRIAN
& BICYCLE**
IMPLEMENTATION INITIATIVE

BDA Feedback on Evaluation Criteria



Franz Loewenherz

Transportation Department

floewenherz@bellevuewa.gov

425-452-4077



BELLEVUE
**PEDESTRIAN
& BICYCLE**
IMPLEMENTATION INITIATIVE

For More Information