



WINTER 2016

Bellevue

Shopping
Downtown
What's New

BELLEVUE
Magic Season

20TH ANNUAL HOLIDAY
CELEBRATION

fly nice™

Nice rewards.

30,000 bonus miles offer | Free checked bag | Annual companion fare offer

The benefits above apply to Visa Signature® accounts only and different benefits apply to Platinum Plus® accounts. Card type is determined by creditworthiness.

The Visa Signature card benefits described herein are subject to certain restrictions, limitations and exclusions. For more information about the rates, fees, other costs and benefits of this credit card, visit MyNewAlaskaVisa.com and refer to disclosures accompanying application. This credit card program is issued and administered by Bank of America, N.A. Visa and Visa Signature are registered trademarks of Visa International Service Association and are used by the issuer pursuant to license from Visa U.S.A. Inc. Platinum Plus is a registered trademark of Bank of America Corporation. ©2016 Bank of America Corporation.



Alaska
Mileage Plan

MyNewAlaskaVisa.com

Dear Bellevue Downtown Reader,

This issue celebrates the continued growth and many exciting additions to Downtown Bellevue making it a memorable place for retail therapy. We've featured some of the outstanding merchants that make Downtown shine as the retail destination of the Northwest.

Downtown Bellevue offers more than 200 shops within close proximity of each other providing options from luxury stores to local boutiques. There are gift ideas and shopping experiences to buy and try on pages 4 – 5.

As our retail continues to grow and new buildings dot the skyline, the winter season holds a strong tradition in Downtown Bellevue. This year marks the 20th annual Bellevue Magic Season which kicks off November 25, turning Downtown Bellevue into a wonderland of holiday celebrations for the entire family.

It's the time of year when Downtown sparkles brightest with brilliant

lights, glistening ice and spectacular performances. Due to construction at Bellevue Downtown Park (which you can read about on page 10) the Bellevue Magic Season Ice Arena has a temporary home for the 2016-2017 season in Ashwood Park, next to the Bellevue Library. Check out more details about the beloved Magic Season events on pages 8 – 9.

If you're looking for that perfect matcha latte to warm you up after a day of shopping and experiencing Snowflake Lane or exploring the holiday festivities like Garden d'Lights, view the guide to new cafés in Downtown Bellevue on page 12.



Patrick Bannon
Bellevue Downtown Association President



Lolli and Pops, sweets emporium in Bellevue Square.
Photo © Jenny Nguyen.

Editor: Althea Conyers Achem
Contributing Writers: Matt Jack, Kelsea Morrison, Jenny Nguyen and Rachel Shimp

WINTER 2016

Holiday Shopping	4
KidsQuest Coming to Downtown..	7
Bellevue Magic Season	8
Bellevue Downtown Park	10
Guide to New Coffee Shops	12
Urbanite.....	14

Join the conversation about
Downtown Bellevue!



/BellevueDowntown



@BellevueDT

Bellevue Downtown is a quarterly publication produced by the Bellevue Downtown Association. For more information about this publication or advertising opportunities, contact Apryl Battin at (425) 990-3095 or apryl@bellevuedowntown.org.

International Ballet Theatre

MEYDENBAUER THEATRE - BELLEVUE
December 10-22



OPENING WEEKEND!

Saturday, Dec 10, 7:30 pm
Sunday, Dec 11, 1:00 and 5:00 pm

16th
Anniversary
Season!

BOOK YOUR TICKETS TODAY!
7:30 pm Evening Performances

Thur 15, Fri 16, and Sat 17

Saturday and Sunday Matinees at 2:00 pm

Saturday 17 and Sunday 18

Magic Season Matinees 2:00 pm Daily

Mon 19, Tues 20, Wed 21, Thur 22

CHILDREN'S
\$25
TICKETS

Online Box Office

TheNutcrackerInBellevue.com



IBT | Bellevue's Premier Ballet Company. Artistic Director Vera Altunina

Experiences & Things

BY RACHEL SHIMP



To Buy and to Try

Experiences are more valuable than things—and yet, we love to give gifts! It allows you to be creative, show your appreciation and spark joy. This holiday season, as Bellevue lights up with celebrations and soirees, we're shopping with experiences in mind. How can presents outlive the season, or your shopping trip ultimately bring you closer to others? Read on for ideas and then, with a warm latte in hand (see page 12 for suggestions), get out there!

The Bravern, Before & After

You've made some lists, checked them twice. You've dog-eared some pages in this year's **Neiman Marcus** Christmas Book (some more wistfully than others). Stow that beautiful beast in your satchel and choose your own adventure en route to Neiman's and the rest of **The Shops at the Bravern**. Story time before shopping? Sure thing, enjoy cookies and cocoa during family-friendly flicks every Sunday in December at the **Bellevue Library**. Or take friends on a spin around the **Bellevue Magic Season Ice Arena** in Ashwood Park (temporary home for the 2016–17 season) adjacent to Bellevue Library before you experience The Bravern's Joy to Your World. There, Santa photos are snapped in the Microsoft building nightly, with pet photo nights scheduled for December 4th and 11th from 6–8 p.m. Holiday concierge services begin the Friday after Thanksgiving and include signature gift wrapping, car service, gift with purchase events and personal shoppers to help you select the perfect gift (or **Jimmy Choo** heels to flatter your cocktail dress from **David Lawrence**).

This year, Trophy Cupcakes & Party expanded their location in The Bravern and reopened as **Café Trophy**, where you can sip champagne with your cake. It's the ideal cozy corner for shopping decompression. Starting in December, enjoy Trophy's seasonal cupcake flavors: Chocolate Candy Cane, Bourbon Egg nog, Orange Gingerbread and Hot Buttered Rum. A display of the café's red velvet macarons will delight the table at your next dinner party. If these treats inspire kitchen wizardry of your own, **Sur La Table** can furnish all the accoutrements for success, from state-of-the-art gadgets to long-lasting tools and beautiful linens.

Light Up the Night: The Bellevue Collection & Garden d'lights

With more than 200 shops and 50 restaurants, **Bellevue Square**, **Bellevue Place** and **Lincoln Square** help you achieve holiday shopping nirvana. And nothing bonds people like the hunt for a bargain or favorite annual buy. But if you're looking to meditate on non-material things, too, joy can be found just outside The Bellevue

Collection all season long. **Snowflake Lane**, through December 24, dazzles with free nightly shows at 7 p.m. featuring live toy soldier drummers, falling snow and glittering lights. After Christmas, Celebration Lane extends the good cheer until New Year's Eve.

Back inside the mall, the wonders continue as shops reveal their new holiday looks. **Nordstrom**, who waits until after Thanksgiving to don their togs, will be bustling with Santa Lane, beauty events and more. VP of Creative Projects Olivia Kim has invigorated the retailer with monthly curated Pop-In Shops, and you won't want to miss December's, called "Love, Pop-In". It asks, "Who are the people you're most thankful for this season?" As you brainstorm, browse the shop's gift suggestions. Everything from USB luggage to unisex casualwear, turntables to instant cameras, and cozy candles to nail art supplies is in the mix—and soon to appear in your hearth's most stylish stockings.

Need another stuffer? Stop by **Lolli and Pops**, a sweets emporium with unique finds from around the world, favorites from childhood and a chocolate library. Thrill the Harry Potter fans in your life with a butter beer. Recall fond travel memories by surprising someone with an international treat. Rumor has it, there's an entire room of gummy bears.

New additions to The Bellevue Collection this year include a **Ted Baker London** boutique, designed with a "high-tea" look inspired by our region's passion for coffee. The classy British purveyor is a sure bet for finding that just-right outfit for your most happening holiday party. The TBL tote bag covered in the brand's photorealistic floral prints makes an excellent gift bag, that's reusable all year as a shopper or sturdy beach-and-picnic tote. (A wine bottle fits nicely inside). You can also pack it with snacks from the newly opened **365 by Whole Foods Market**. The Bellevue Square location is the third smaller-format store from Whole Foods to open in the United States, offering everyday values on produce, organic wines and craft beer. A six pack or a gift card will do nicely.

Old Bellevue Is Merry & Bright

While done up in lights for the season, Main Street retains year-round walkable charm. Hit the block for dinner after visiting Bellevue



Opposite page: Café Trophy's Red Velvet Macarons. Photo © Jim Henkens. Above: West Elm Bellevue at the Venn at Main. Photo © Jenny Nguyen. Bottom Left: Whisk cooking class preparation. Photo courtesy of Whisk.

Botanical Garden's **Garden d'Lights**, a short drive away. Each year, more than half a million lights are arranged among the foliage, into a remarkable display of artistic creations as well as symbolism from classic fairy tales. Or, check out a holiday performance at **Meydenbauer Center Theatre**. Each year's series of musical and dramatic productions offer ready-made options to please anyone in your family. From ballet to string concerts to theatre, you're sure to agree on the entertainment (if nothing else).

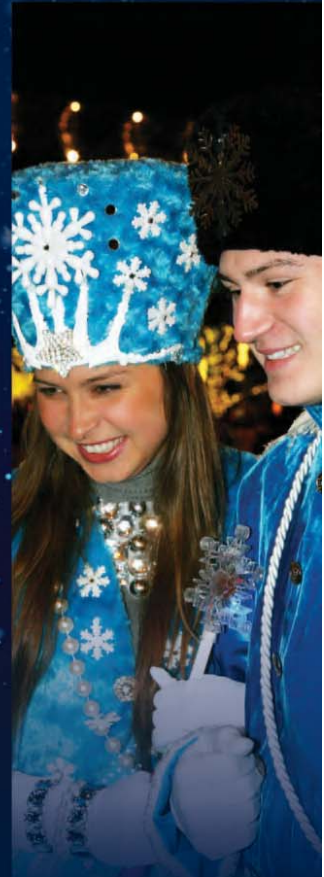
If your teamwork is strong, tackle a cooking class at **Whisk**, opened this year by Ann and Don Perinchief. Popular courses include "healthy date-night in" menus from Simply Real Health's Sarah Adler and the monthly Make-Ahead Three-Course Dinner Party with chef Aaron Tekulve. Team-build or meet likeminded foodies in these classes scaled for 8 to 16, focused in December on Biscotti for the Holidays, Gifts from the Kitchen and French classics like Beef Bourguignon. After working together to craft an exquisite meal, the chefs even show proper plating before everyone sits down to taste. Kids are especially fond of the pizza and pasta-making workshops, says Ann—"Everyone loves to get their hands dirty."

For last-minute gift grabs elsewhere on Main Street, new merchant **West Elm** and children's store **Wee Tots** provide charming options at a range of price points. Additionally, **Green Lake Jewelry Works** have brought their sophisticated vision to the Eastside. When the occasion calls for a bold statement, or a special question, the artists at Green Lake work alongside clients to craft original fine jewelry—co-creating, as they say, what may be your most memorable purchase ever. That reflects the best of what gift-giving during the holidays can represent: tangible reminders of the excellent moments, places and people in our lives.



Snowflake Lane

Presented by
THE BELLEVUE COLLECTION™



The
One

PLACE WHERE SNOW FALLS EVERY NIGHT.

Experience the wonder of our spectacular holiday performances with toy soldier drummers, characters, exhilarating music, swirling snowflakes and glittering lights.

SNOWFLAKE LANE: 7 pm, Nov. 25 – Dec. 24

CELEBRATION LANE: 7 pm, Dec. 26 – Dec. 31



THE BELLEVUE
COLLECTION™

The One and Only Snowflake Lane

Learn more at snowflakelane.com

KidsQuest Children's Museum Opening in Downtown Bellevue

BY KELSEA MORRISON

Filled with adventures and activities that spark imagination, the KidsQuest Children's Museum is an exciting learning opportunity for the whole family. Kids of all abilities can embrace their curiosity and adults can unleash their inner child in the new 13,500 square-foot museum located next to Ashwood Park and the Bellevue Library.

- The new **Sticks + Stones Outdoor Gallery** is where kids are able to splash around, try their hand at gardening and dance along with the music wall.
- If there isn't enough water play at the Outdoor Gallery, head through the folding glass wall that opens up to the reimagined **Water Gallery**. Toddlers even have their own splash zone.
- Children are able to learn new skills as they operate a conveyor belt or explore the Big Rig semi-truck cab at the **On the Go Gallery**.
- The **Tot Orchard** gives plenty of sensory activities for children birth to age three. They can discover the orchard kitchen, pick pretend fruit from the tree or push a fruit cart.
- If your child has a wild imagination, the **Story Tree Gallery** is for them. Kids are able to use the stage to put on shows or curl up with a good book in a reading nook.
- The **Bellevue Mercantile** gives kids the opportunity to explore historic Bellevue. With an ice cream parlor and cow wash, they can play and learn at the same time.
- Kids can learn more about their surroundings at the **Cityscape Gallery**. The large train table helps them visualize

the beautiful landscape that makes up Bellevue and Seattle.

- Imagine the world from 28 feet up! The two-story **Climber** is designed for ages 5+ and promotes gross motor exploration. The toddler climbing area will delight little adventurers.
- Learning is a blast when one of the three classrooms is an **Art Studio** with a kiln. Kids can paint or try creating with clay in weekly workshops. The possibilities are endless!

"We are so excited to be moving to Downtown Bellevue," said Putter Bert, KidsQuest President & CEO. "We have 11 years of engaging the community and families of diverse backgrounds and abilities in exceptional educational experiences, we are chomping at the bit to see what new partnerships and opportunities await us."

KidsQuest Children's Museum will be **open to the public starting January 2017**. They are committed to "Safe Risk"—allowing both the child and the adult chances to step out of their comfort zones and try something new and daring. Visit their website KidsQuestMuseum.org for information about their popular programs, membership, hours and more.



The BELLETTINI
BLAZE YOUR OWN RETIREMENT

CHOICES.
WHO WOULDN'T
TOAST TO THAT?



*Join us in the Toscano restaurant
and see why so many have made
The Bellettini their new home!*

*Call today to schedule your
complimentary lunch and tour in
the Toscano restaurant or
Panini Bistro.*

The choice is yours.

The BELLETTINI



1115 108th Ave. NE Bellevue, WA 98004

425.450.0800

www.thebellettini.com



*Skate on glistening ice,
experience the drummers'
beat, grab falling snow,
stroll through spectacular
light displays, and
see a time-honored
holiday show!*



**BELLEVUE
MAGIC SEASON**
Ice Arena
PRESENTED BY
Alaska
Mileage Plan

BELLEVUE
Magic Season
NOVEMBER 25-
JANUARY 8

November 25-January 8

Ashwood Park - Next to Bellevue Library
Temporary Home for This Season

*The region's largest, covered open-air holiday
ice skating experience.*

- * \$12 Admission (includes skate rental), \$9 Admission for 8 year-olds and under (includes skate rental)
- * Advance discount admission pass - Purchase 10 skating passes for \$85 (a \$35 savings)!
- * Open Christmas Eve, Christmas Day and New Year's Day

Free Skate Mondays*

Compliments of the Alaska Airlines Visa Signature® card and Bank of America. Show your Alaska Airlines Visa Signature® card or Bank of America debit or credit card to receive two free skate admissions for skating on Mondays.

Library Appreciation Days

Skate free on Tuesday, November 29 and Tuesday, December 6, compliments of the Bellevue Library. Show your KCLS card to receive one free skate admission.

Free Lesson Tuesdays, Wednesdays and Thursdays**

Free Skating lessons courtesy of Overlake Medical Center. Professional instructors will give skating lessons November 29-30, December 1, 6-8, 13-15, and January 3-5, 6:30-8:30 p.m.

Stroller Skate Thursdays**

Parents and young ones can share some fun on the ice! Skate and push your stroller around the rink prior to public hours on Thursdays.

Husky Skate Day

SUNDAY, DECEMBER 4, NOON TO 2 P.M. Join us for a special purple and gold skating event. Enjoy special treats from New York Cupcakes and Jamba Juice (while supplies last). Show your Husky spirit by sporting Husky gear and receive a \$3 discount on your admission.

Grandparents Day

SUNDAY, DECEMBER 11 Compliments of Aegis of Bellevue. Grandparents and their grandchildren receive free skate admission.

* Limit of two admissions per person and limited to skate availability.
To apply for the Alaska Airlines Visa Signature® card, visit www.alaskaair.com.
** With paid admission

Visit BellevueDowntown.com or call (425) 453-1223 for skating hours, promotions and special events.

Snowflake Lane
THE BELLEVUE
COLLECTION

November 25-December 24

Between Bellevue Square, Bellevue Place
and Lincoln Square

The One Place Where Snow Falls Every Night

- * FREE nightly shows at 7 p.m.

Every night the streets at The Bellevue Collection are filled with live toy soldier drummers and dancing snow characters, exhilarating music, glittering lights and falling snow! This magical evening performance is a delight for the entire family.

Visit SnowflakeLane.com

KidsQuest
children's Museum

Gingerbread Workshops

November 25 & 26

Hyatt Regency Bellevue, Evergreen Ballroom

Work together with family or friends to decorate a unique gingerbread house. KidsQuest provides the materials including a giant candy buffet and lots of icing.

- * \$45 for KidsQuest member family
- * \$50 for non-member family

Visit kidsquestmuseum.org/gingerbreadworkshops to register.
Space is limited; pre-registration recommended.



MEYDENBAUER CENTER THEATRE

November 25–December 31

Meydenbauer Center

Snowman

November 25–27
City Opera Ballet

Goodnight Moon and the Runaway Bunny

November 29
Village Theatre Pied Piper
School Shows Only!

The Nutcracker

December 2–4
Evergreen City Ballet

Magical Strings, A Celtic Yuletide

December 6

The Nutcracker

December 10–13 & 15–22
International Ballet Theatre

An Inspired New Year

December 31
Breath of Aire

Tickets for many events are available at brownpapertickets.com
or by calling (800) 838-3006. Visit meydenbauer.com



BELLEVUE BOTANICAL
GARDEN

CLASSICAL

KING FM 98.1
www.KING.org

Garden d'Lights

November 26–December 31

*Presented by Bellevue Botanical Garden Society and
Bellevue Parks & Community Services, supported by
Classical KING FM 98.1*

Garden d'Lights features over half a million lights which
transform the Bellevue Botanical Garden into a blossoming
winter wonderland.

- ✱ Open nightly, 4:30–9 p.m.
- ✱ \$5 admission, children 10 and under are free
- ✱ Free parking at Wilburton Hill Park, on-site
parking \$5 per vehicle

Visit gardendlights.org or call (425) 452-6844



THE
BRAVERN

Joy to Your World

Celebrate the season at The Bravern with our VIP Holiday
Concierge Services including signature gift wrap, car service,
gift with purchase and personal shoppers. Gather your family,
friends and pets for a photo with Santa.

Visit thebravern.com



20TH ANNUAL

Winter-Fun Activities

Bellevue Library

- ✱ All sessions are FREE, and are first-come, first-served
- ✱ No advance registration required
- ✱ All sessions are sponsored by Bellevue Friends of the Library

Winter themed family movies

SUNDAYS, DECEMBER 4, 11, 18, AND JANUARY 8, 3 P.M. Movies are
G or PG rated. Enjoy cocoa and cookies as you snuggle up for
some wintery film fun. All ages welcome.

DIY 3-D snowflake class

WEDNESDAY, DECEMBER 7, 6:30 P.M. Join us for an evening of 3-D
snowflake crafting for teens and adults.

Introduction to snowshoeing

THURSDAY, DECEMBER 8, 6:30 P.M. Meet author Dan Nelson and
learn about the best places to snowshoe in Washington.

Musical performance by the Seattle Mandolin Orchestra

SATURDAY, DECEMBER 10, 4 P.M. Enjoy a special holiday concert
by the Seattle Mandolin Orchestra.

Fun by the Fireside Sing-Along Show

TUESDAY, DECEMBER 20, 2 P.M. *Presented by Elephant Umbrella*
Sing and dance along to memorable tunes about fall and
winter. All ages welcome.

Visit kcls.org/magicseason or call (425) 450-1765



December 26–December 31

Sidewalks between Bellevue Square,
Bellevue Place and Lincoln Square

Don't miss Celebration Lane, The Bellevue Collection's
glittering salute to ringing in the New Year!

- ✱ FREE nightly shows at 7 p.m.

Visit SnowflakeLane.com

**Visit BellevueDowntown.com to learn
more about events and activities**

BellevueDowntown.com

[f / BellevueDowntown](https://www.facebook.com/BellevueDowntown)

[@BellevueDowntown](https://www.instagram.com/BellevueDowntown)

[@BellevueDT](https://twitter.com/BellevueDT)

[#BellevueMagicSeason](https://www.instagram.com/BellevueMagicSeason)



Ice Arena Presenting Sponsor



Supporting Sponsors



Media Sponsors



Supported by



BELLEVUE DOWNTOWN
ASSOCIATION

Graphic design by gravity

The City's Journey to Complete the Circle

BY MATT JACK



If you have passed Bellevue Downtown Park lately, you likely noticed chain link fences and turned earth from construction. What you're witnessing is the final chapter of the park's long history towards completion, a vision established over 30 years ago coming to fruition.

The early 1980s was a booming period of commercial development in Downtown Bellevue, and with growth comes prosperity as well as new challenges; buildings popped up and public space shrank. The city leadership was quick to identify the need to preserve an open area, so in December of 1983, the City of Bellevue purchased 17 acres from the Bellevue School District. An ambitious purchase that later became the Bellevue Downtown Park.

After purchasing the property, the City held a juried competition with 67 design entries from contestants across the United States, Canada and Europe. The winning design was submitted by Milwaukee based architectural firm Beckley/Meyers whose proposal called for a circular promenade with a continuous canal ending at a waterfall.

With the property purchased and design approved, the city established the Bellevue Downtown Park Master Plan in 1984. Since then, the park has expanded an additional 4 acres with multiple amenity improvements, yet the original concept to complete the circle had been delayed for decades. Why was the park not completed then and why has it taken so long to finish?

From the beginning, the park's funding source was a pay-as-you-go system structured to finance phases of development. Imagine a pie being assembled one piece at a time. The initial investment for the first phase was privately funded by a community drive that completed the northeast corner in 1986. Later in 1990, a municipal bond funded the second phase which completed the western side. By then, the only missing pie piece was the southeast corner.

In 1997, the Bellevue Downtown Park Master Plan Update was introduced to complete the Southeast corner of the original design. But concerns over parking and potential development opportunities derailed the momentum, and the effort to complete the circle was shelved for a later date.

It was not until 2008 when the Downtown Park was able to secure funding through the Parks & Natural Areas Levy passed by the citizens of Bellevue. Since the levy's approval eight years ago, the city has been sequencing funding into designing, public outreach, permit assistance and construction. Now, beginning this last July, the park is undergoing the final step

Architectural illustration of completed circle courtesy of Stephanie Bower

of construction with the expectation of completion for July 2017 (yes, the objective is to complete the park before the annual Bellevue Family 4th Celebration).

The new Southeast corner will stay true to its original concept: a grassy terrace connecting the northeast section to the south entrance bordered by a continuous cascade of canal drops to the pond. Additionally, the park will once again benefit from a private-public partnership; the Bellevue Rotary Club has raised funds to transform the existing play area into the "Inspiration Playground" – a specially designed playground experience with sensory equipment for children with and without disability to enjoy.

The City has gone to great lengths to assuage old concerns and mitigate the impact of construction. The final phase includes additional parking to compensate for the removed stalls. And if you're looking for the annual Bellevue Magical Season Ice Arena, it has been temporarily relocated to nearby Ashwood Park (adjacent to Bellevue Library).

We may be experiencing the pains of construction now, but by this time next year, you'll be able to enjoy a project that has spanned decades of hard work, extensive planning and public-private cooperation. The Bellevue Downtown Park will have finally completed the circle.



**Be in
the know**

Get construction alerts

Light rail construction has begun in Bellevue. Learn how to get around during construction by visiting soundtransit.org/east-link-construction

FOR MORE INFORMATION: Please visit soundtransit.org/eastlink, or contact Sound Transit at 206-398-5470, eastlink@soundtransit.org. For information in alternative formats, call 1-800-201-4900/TTY Relay: 711 or email accessiblity@soundtransit.org



 **SOUNDTRANSIT**

Guide to New Coffee Shops

BY JENNY NGUYEN



Ever since Starbucks brought us the “third place,” coffee stores are opening with unique personalities and their own stories to share. Ready to house everything from the most intimate conversation to the most serious of business. Here are some new spots in Downtown Bellevue that will cater to whatever java experience you’re looking for.

Copper Kettle Coffee Bar

Hidden away in the Bellevue Botanical Gardens is the quaint and charming Copper Kettle Coffee Bar. This is a nice alternative where you’re able to enjoy a delightful cup of coffee while taking in the spectacular scenery of the gardens.

Along with the great coffee and prime location this coffee shop is truly unique for its story and staff. Local owner Tony Frizelle runs the business with two friends. He decided to go for his dream and open up his own business after making full recovery from lymphoma. Frizelle and his team demonstrate an excitement and passion for coffee and life.

Try: Vanilla Chai

Fika House Kafé

Fika is a Nordic-inspired café brought to you by the same folks as 99 Park. The café located at the base of Soma Towers has a bright and tastefully minimalist interior with simple seating options. Fika knows how to set the bar for an inimitable coffee outing. They offer coffee flights, pairings, wine and Belgium waffles with organic house-made syrup. They’re spoiling us this season with an exclusive selection of holiday flavors including pumpkin spice, peppermint mocha and holiday spice blend syrup.

Try: Lavender Latte

Fonté Café

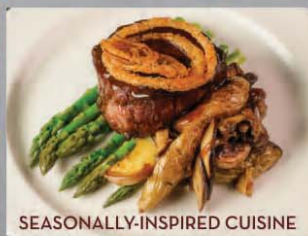
From the beans to milk, Fonté really focuses on the craft of the coffee. Founder Paul Odom made it his mission to create the finest coffee and espresso blends and that’s exactly what he did. Fonté roasts their own first class beans and brews them masterfully. Their menu carries classic favorites to new world creations. They are a serious contender in the game where they deliver the highest quality coffee along with unbeatable customer service. You can find them in the Hyatt Regency lobby.

Try: Turkish Latte

Honor Coffee

If you’re looking for a casual place to work with exceptional coffee stop by Honor at

ENJOY THE BEST OF THE SEASON AT BAKE'S



HAUTE PICK
2013 | 2014

BAKE'S
PLACE
MUSIC • BAR • BISTRO



BEST OF
2013 | 2014 | 2015

BAKESPLACEBELLEVUE.COM • 155 108TH AVE NE STE 110 BELLEVUE • 425.454.2776

the Alley 111 building. The spacious layout has comfortable seating, accessible outlets and complimentary chocolate-covered almonds to treat yourself between tasks. Honor also serves gourmet sandwiches, beer and wine for the later crowd. The staff loves stirring up conversations and helping their customers with their go-to order or coming up with a new beverage for them to love. They'll go above and beyond to show how much they honor your patronage.

Try: Matcha Latte

Woods Coffee

Woods Coffee is an iconic Pacific Northwest coffee chain that is family owned and operated. Woods got its start in Lynden and has expanded to 19 locations stretching from British Columbia, Canada to Bellevue Square. They source the finest beans from around the world, and the freshest ingredients in Washington. In addition to their Pacific Northwest interiors, you can expect handcrafted beverages, amazing food, and outstanding customer service.

Try: Peppermint Bark Mocha



Top left: Honor's Matcha Latte. Photo © Jenny Nguyen.
Above: Photo courtesy of Copper Kettle Coffee Bar.




Let us help you with all your Mortgage Financing needs!

DIRECTORS MORTGAGE IS YOUR *BELLEVUE* MORTGAGE EXPERT!

425.643.6111

Bellevue@directorsmortgage.net
directorsmortgage.net/mortgage-broker-bellevue

f t in

Information deemed reliable but subject to change without notice. Qualifying buyers only, subject to credit approval. This is not a commitment to lend. Call for details. Consumer Loan License NMLS-3240, CL-3240.







**Now serving slices
at Bellevue Square!**

Located at 563 Bellevue Square
Call for Free Delivery! 425.453.1717
 Visit Pagliacci.com for our full menu.
 Check out our Facebook and Twitter!



Tyler

BY KELSEA MORRISON

OCCUPATION: ARTIST AND
BARTENDER, WILD GINGER

**When did you move to
Downtown Bellevue?**

I grew up around Bellevue until I was 22 or so, then moved to San Francisco to chase a girl and for a change of pace. I spent four years in the city and loved it but when I moved back to Washington I knew I was going to be in Downtown Bellevue.

**What are some of your
fondest memories of
Bellevue from your
childhood?**

As a kid I remember walking to the 7-11 that used to be next to Chase's Pancake Corral on Bellevue Way and buying penny candies. I really just miss how laid back it was, getting a new CD at Tower Records or Cellophane

Square, taking change from the fountains at Bellevue Square to buy some ice cream at McDonalds or Arby's. I remember seeing the first Jurassic Park at John Danz theatre as a kid and totally freaking out.

**What do you love most about your
profession?**

Art is my passion. I love expression and use it mostly as my own therapeutic escape. I enjoy bartending a lot because of the social aspect, although some could argue we are artists in our own right. I think being at Wild Ginger at The Bravern is a great place to bartend because it attracts people from all over the United States as well as the world thanks to some companies like Microsoft and Expedia, who are frequent guests.

**What is your ideal weekend in
Downtown Bellevue?**

My ideal weekend would involve brunch with friends, typically at 520 Bar and Grill, a Seahawks win followed by dinner and a bottle of wine at Cantinetta. As a bartender sometimes hours can get a little long so I would definitely say that Paddy Coyne's and Lot No. 3 are the go-to places for late nights.

**What is your favorite winter tradition in
Downtown Bellevue?**

I love the first week of Snowflake Lane, you know, before I've seen it 10,000 times. I'm a big fan of snow. I'm the same as when I was a kid, hoping it would snow so I didn't have to go to school.

**Why did you choose to live in
Downtown Bellevue?**

I've always preferred Downtown Bellevue to most of the surrounding areas. I like going where I know people, but also enjoy building new relationships. I also like that I have grown with the city. **It seems like when I was a kid, so was the city, and as I have grown older and wiser Bellevue has been right there doing the same thing.**

**BAM BIENNIAL
2016**

THRU 2/5/17

**METAL
MORPHOSIS**

49 NW ARTISTS
CAST YOUR VOTE

BAM Biennial 2016: Metamorphosis is organized by Bellevue Arts Museum and curated by Jennifer-Nava Milliken. Sponsored by The Boeing Company and The Norcliffe Foundation.

Media sponsor **KUOW 94.9**

ART | CRAFT | DESIGN
BELLEVUE ARTS MUSEUM

bellevuearts.org

BOEING **THE NORCLIFFE FOUNDATION**

BE OUR NEXT URBANITE

Do you live and work in Downtown Bellevue?
Email inbox@bellevuedowntown.org
and tell us your place of residence,
employer and Downtown Bellevue story.




★★★★★
★★★★★
★★★★★

"Britt has my highest recommendation and undying gratitude."

"If you have the chance to work with Britt, seize it. She is outstanding in every way."

"She is truly in a class of her own."

Bellevue School District Focused Complimentary Staging Services

BRITT WIBMER
Premier Windermere Broker
206.683.1737
www.BrittsPicks.com

Windermere
REAL ESTATE

2016 BELLEVUE SCHOOLS FOUNDATION Honor Roll Realtor

Zillow.com
5-STAR AGENT

Rub-a-dub-dub, that's Charlie in the tub, getting ready for the ride to the kitchen with the help of his big brother Jack.




10213 Main Street, Bellevue
(425) 455-2033 www.bisonmain.com
Free valet parking


"Meet the new Bis busboys."
— Joe Vilardi, owner




21 floors
See the mountains from a new angle, 21 floors up.




45 degrees
When there's a chill in the air it's the perfect time to gather 'round the firepit.



16 GBs
Hear your entire library of tunes through your built-in apartment speakers.




60 seconds
Wake up and smell the coffee. Your onsite coffee shop is a one-minute elevator ride!



NOW LEASING!
Studios, 1-Bedrooms, 2-Bedrooms, & Penthouse Suites

SOMA TOWERS
color outside the lines

425 467 0288
288 106th Avenue NE
Bellevue WA 98004
www.somatowersapts.com
lease@somatowersapts.com



BEST IF USED.

40% OF FOOD IN AMERICA IS WASTED

**COOK IT, STORE IT, SHARE IT.
JUST DON'T WASTE IT.**

SAVETHEFOOD.COM

